

# JOINT PUBLIC NOTICE

January 11, 2016

United States Army  
Corps of Engineers  
New Orleans District  
Regulatory Branch  
Post Office Box 60267  
New Orleans, Louisiana 70160-0267

(504) 862-2225  
[Brad.LaBorde@usace.army.mil](mailto:Brad.LaBorde@usace.army.mil)  
Project Manager  
Brad LaBorde  
Permit Application Number  
MVN 2008-0031 EOO

State of Louisiana  
Department of Environmental Quality  
ATTN: Water Quality Certifications  
Post Office Box 4313  
Baton Rouge, Louisiana 70821-4313

(225) 219-3225  
Project Manager  
Elizabeth Hill  
WQC Application Number  
WQC 160107-01

Interested parties are hereby notified that a permit application has been received by the New Orleans District of the U.S. Army Corps of Engineers pursuant to: [ ] Section 10 of the Rivers and Harbors Act of March 3, 1899 (30 Stat. 1151; 33 USC 403); and/or [X] Section 404 of the Clean Water Act (86 Stat. 816; 33 USC 1344).

Application has also been made to the Louisiana Department of Environmental Quality, Water Quality Certifications, for a Water Quality Certification (WQC) in accordance with statutory authority contained in LRS30:2047 A(3), and provisions of Section 401 of the Clean Water Act (P.L.95-17).

## **St. Charles Power Station Project in Montz, Louisiana**

**NAME OF APPLICANT:** Entergy Louisiana, LLC % CB&I, Attn: Deborah Saxton, 4171 Essen Lane, Baton Rouge, Louisiana, 70809.

**LOCATION OF WORK:** Within the existing boundary of the Entergy Louisiana, LLC, Little Gypsy Generating Plant, on the batture of the Mississippi River's left descending bank, approximately 129.5 miles above Head of Passes, in Montz, Louisiana, St. Charles Parish, as shown on the enclosed drawings.

Latitude: 0.004511, Longitude: -90.464125  
Hydrologic Unit Code: 08070204 – Lake Maurepas Watershed

**CHARACTER OF WORK:** The applicant proposes to install a combined cycle gas turbine, ancillary equipment, and appurtenances for the St. Charles Power Station. The proposed project is primarily located in disturbed uplands; however, the construction roads, power block, laydown yard, new gas lines, utilities, and metering station are anticipated to permanently impact 0.89 acres of Waters of the U.S. and temporarily impact 0.58 acres of Waters of the U.S. No mitigation plan was submitted with this action because the power plant design does not directly impact jurisdictional wetlands as proposed.

The comment period for the Department of the Army Permit and the Louisiana Department of Environmental Quality WQC will close **20 days** from the date of this joint public notice. Written comments, including suggestions for modifications or objections to the proposed work, stating

reasons thereof, are being solicited from anyone having interest in this permit and/or this WQC request and must be mailed so as to be received before or by the last day of the comment period. Letters concerning the Corps of Engineers permit application must reference the applicant's name and the Permit Application Number, and be mailed to the Corps of Engineers at the address above, **ATTENTION: REGULATORY BRANCH.** **Individuals or parties may request an extension of time in which to comment on the proposed work by writing or e-mailing the Corps of Engineers Project Manager listed above. Any request must be specific and substantively supportive of the requested extension, and received by this office prior to the end of the initial comment period. The Section Chief will review the request and the requestor will be promptly notified of the decision to grant or deny the request. If granted, the time extension will be continuous to the initial comment period and, inclusive of the initial comment period, will not exceed a total of 30 calendar days.** Similar letters concerning the Water Quality Certification must reference the applicant's name and the WQC Application number and be mailed to the Louisiana Department of Environmental Quality at the address above.

The application for this proposed project is on file with the Louisiana Department of Environmental Quality and may be examined during weekdays between 8:00 a.m. and 4:30 p.m. Copies may be obtained upon payment of costs of reproduction.

### **Corps of Engineers Permit Criteria**

The decision whether to issue a permit will be based on an evaluation of the probable impacts, including cumulative impacts of the proposed activity on the public interest. That decision will reflect the national concern for both protection and utilization of important resources. The benefit which reasonably may be expected to accrue from the proposal must be balanced against its reasonably foreseeable detriments. All factors which may be relevant to the proposal will be considered including the cumulative effects thereof; among those are conservation, economics, aesthetics, general environmental concerns, wetlands, historic properties, fish and wildlife values, flood hazards, floodplain values, land use, navigation, shoreline erosion and accretion, recreation, water supply and conservation, water quality, energy needs, safety, food and fiber production, mineral needs, considerations of property ownership and, in general, the needs and welfare of the people.

The U.S. Army Corps of Engineers is soliciting comments from the public, federal, state, and local agencies and officials, Indian Tribes, and other interested parties in order to consider and evaluate the impacts of this proposed activity. Any comments received will be considered by the U.S. Army Corps of Engineers to determine whether to make, modify, condition, or deny a permit for this proposal. To make this decision, comments are used to assess impacts on endangered species, historic properties, water quality, general environmental effects, and other public interest factors listed above. Comments are used in the preparation of an Environmental Assessment and/or an Environmental Impact Statement pursuant to the National Environmental Policy Act. Comments are also used to determine the need for a public hearing and to determine the overall public interest of the proposed activity.

The New Orleans District is unaware of properties listed on the National Register of Historic Places near the proposed work. The possibility exists that the proposed work may damage or destroy presently unknown archeological, scientific, prehistorical, historical sites, or data. Issuance of this public notice solicits input from the State Archeologist and State Historic Preservation Officer regarding potential impacts to cultural resources.

Our initial finding is that the proposed work would neither affect any species listed as endangered by the U.S. Department of Commerce, nor affect any habitat designated as critical to the survival and recovery of any endangered species.

Utilizing Standard Local Operating Procedure for Endangered Species in Louisiana (SLOPES), dated October 22, 2014, between the U.S. Army Corps of Engineers, New Orleans and the U.S. Fish and Wildlife Service, Ecological Services Office, the Corps has determined that the proposed activity would have no effect on any listed species.

This notice initiates the Essential Fish Habitat (EFH) consultation requirements of the Magnuson-Stevens Fishery Conservation and Management Act. The applicant's proposal would result in the destruction or alteration of **N/A** acres of EFH utilized by various life stages of red drum and penaeid shrimp. Our initial determination is that the proposed action would not have a substantial adverse impact on EFH or federally managed fisheries in the Gulf of Mexico. Our final determination relative to project impacts and the need for mitigation measures is subject to review by and coordination with the National Marine Fisheries Service.

If the proposed work involves deposits of dredged or fill material into navigable waters, the evaluation of the probable impacts will include the application of guidelines established by the Administrator of the Environmental Protection Agency. Also, a certification that the proposed activity will not violate applicable water quality standards will be required from the Department of Environmental Quality, Water Quality Certifications, before a permit is issued.

Any person may request, in writing, within the comment period specified in this notice, that a public hearing be held to consider this application. Requests for public hearings shall state, with particularity, the reasons for holding a public hearing.

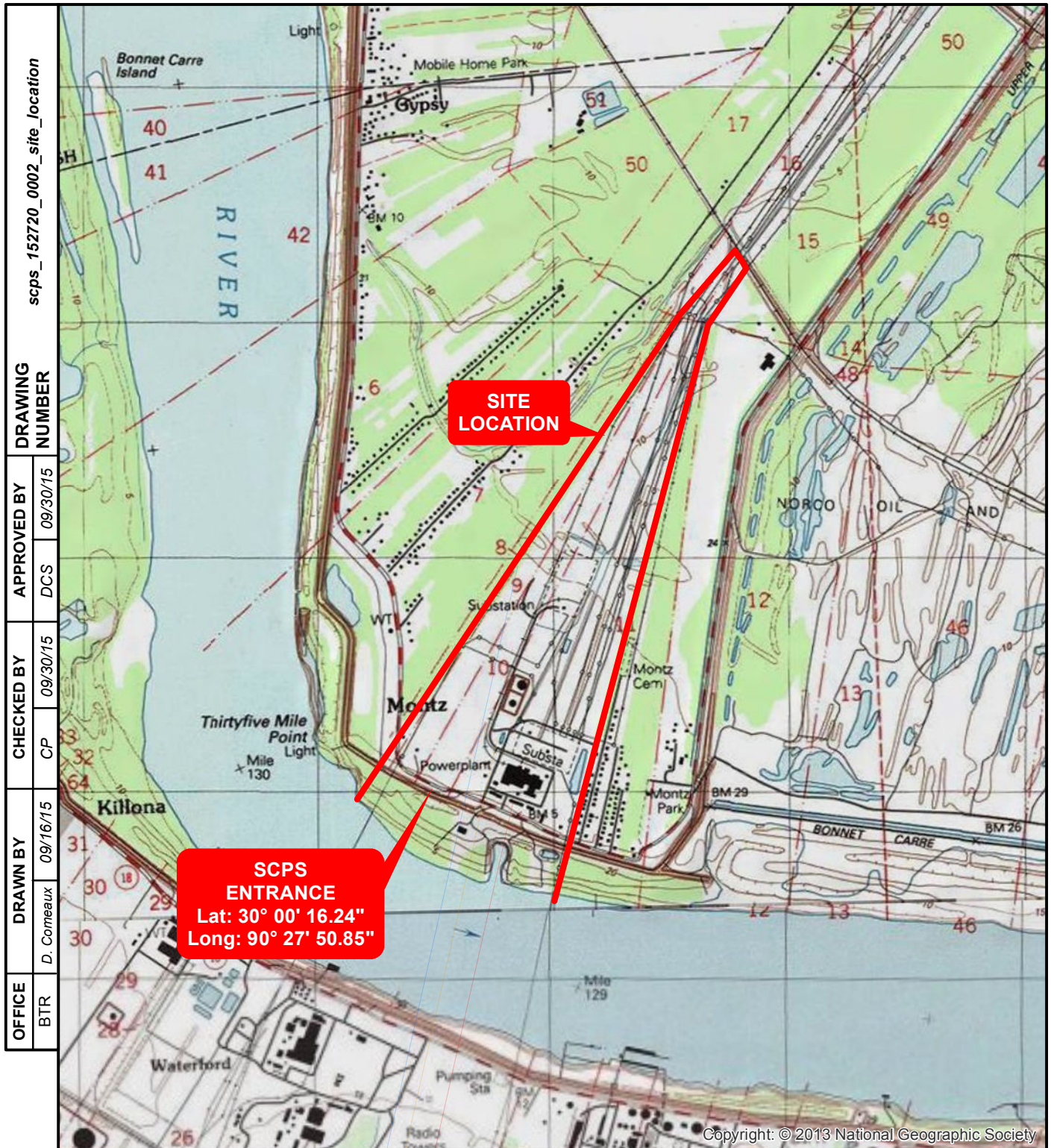
The applicant has certified that the proposed activity described in the application complies with and will be conducted in a manner that is consistent with the Louisiana Coastal Resources Program. The Department of the Army permit will not be issued unless the applicant received approval or a waiver of the Coastal Use Permit by the Department of Natural Resources.

You are requested to communicate the information contained in this notice to any other parties whom you deem likely to have interest in the matter.

Michael V. Farabee  
Chief, Eastern Evaluation Section

Enclosure

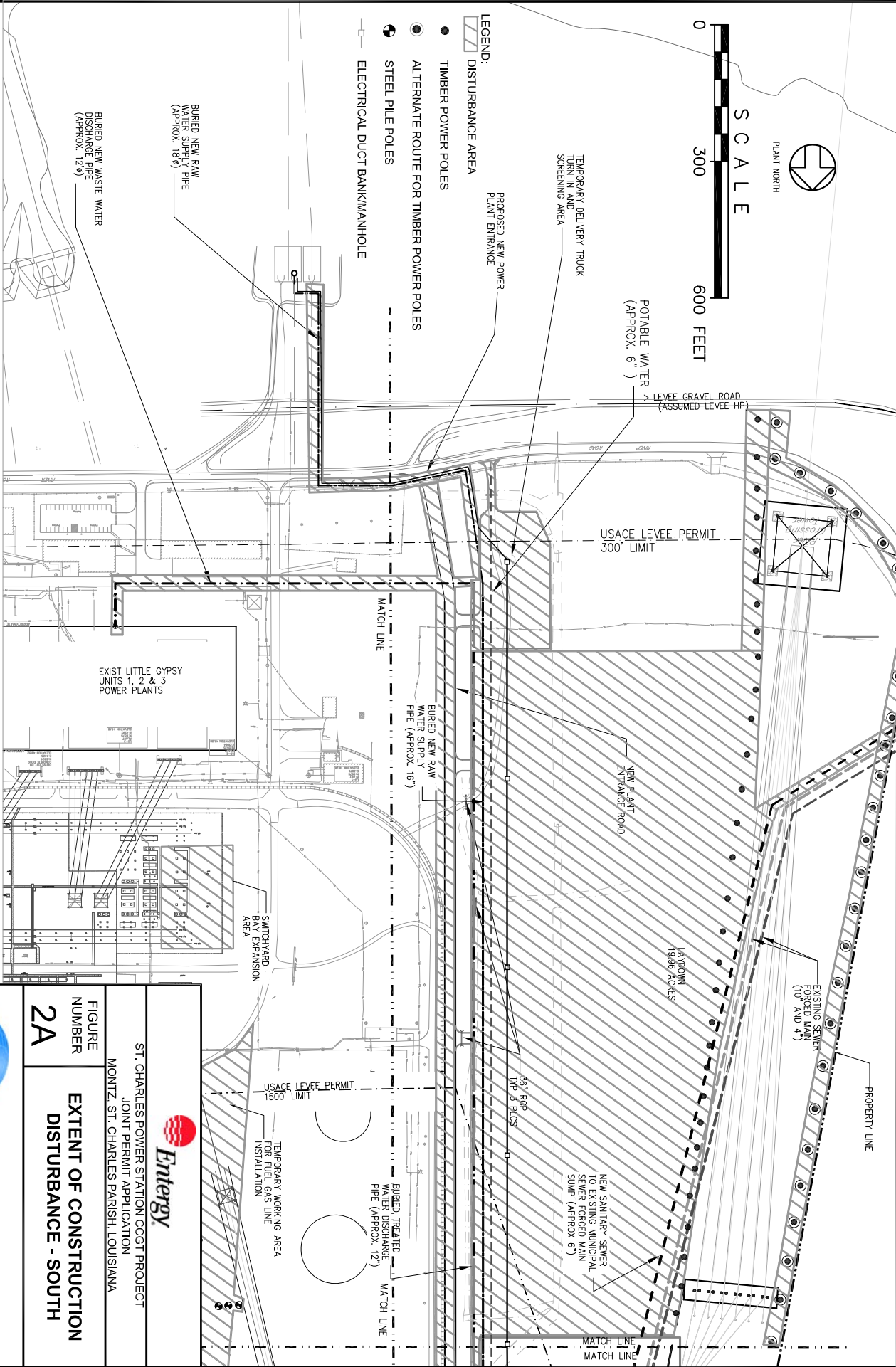




ST. CHARLES POWER STATION CCGT PROJECT JOINT PERMIT APPLICATION MONTZ, ST. CHARLES PARISH, LOUISIANA	
FIGURE NUMBER <div style="font-size: 2em; font-weight: bold;">1</div>	<b>SITE LOCATION</b>
CB&I Government Solutions, Inc. 4171 Essen Lane Baton Rouge, Louisiana 70809	



OFFICE	DRAWN BY	CHECKED BY	APPROVED BY	DRAWING NUMBER
BTR	D. COMEAUX	CP	DCS	scps_152720_A35



NOTES:  
1. SEE FIGURES 2A-1 AND 2B FOR MATCH LINES.

REFERENCE: Source Drawing provided by CB&I Power, 152675-000-CV-002-00010 Rev B.



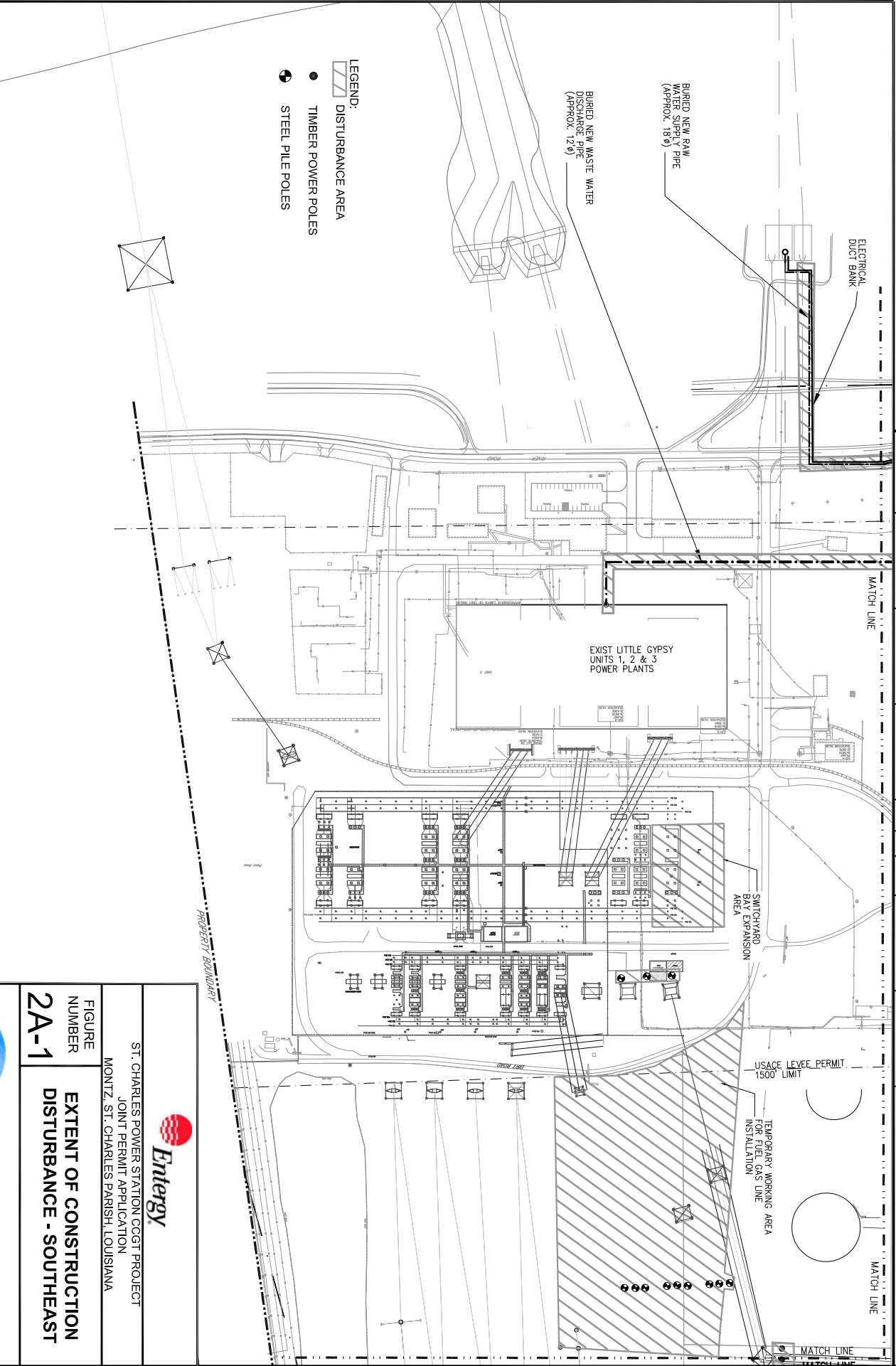
CB&I Government Solutions, Inc.  
4171 Essen Lane  
Baton Rouge, Louisiana 70809



ST. CHARLES POWER STATION COGT PROJECT  
JOINT PERMIT APPLICATION  
MONTZ, ST. CHARLES PARISH, LOUISIANA

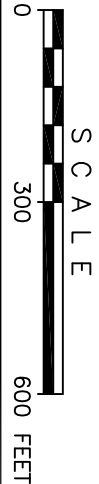
FIGURE NUMBER  
**2A**  
EXTENT OF CONSTRUCTION  
DISTURBANCE - SOUTH

OFFICE	DRAWN BY	CHECKED BY	APPROVED BY	DRAWING NUMBER
BTR	D. COMEAUX	CP	DCS	scps_152720_A58



NOTES:  
 1. SEE FIGURES 2A AND 2B FOR MATCH LINES.

REFERENCE: Source Drawing provided by CB&I Power, 152675-000-CV-002-00010 Rev B.



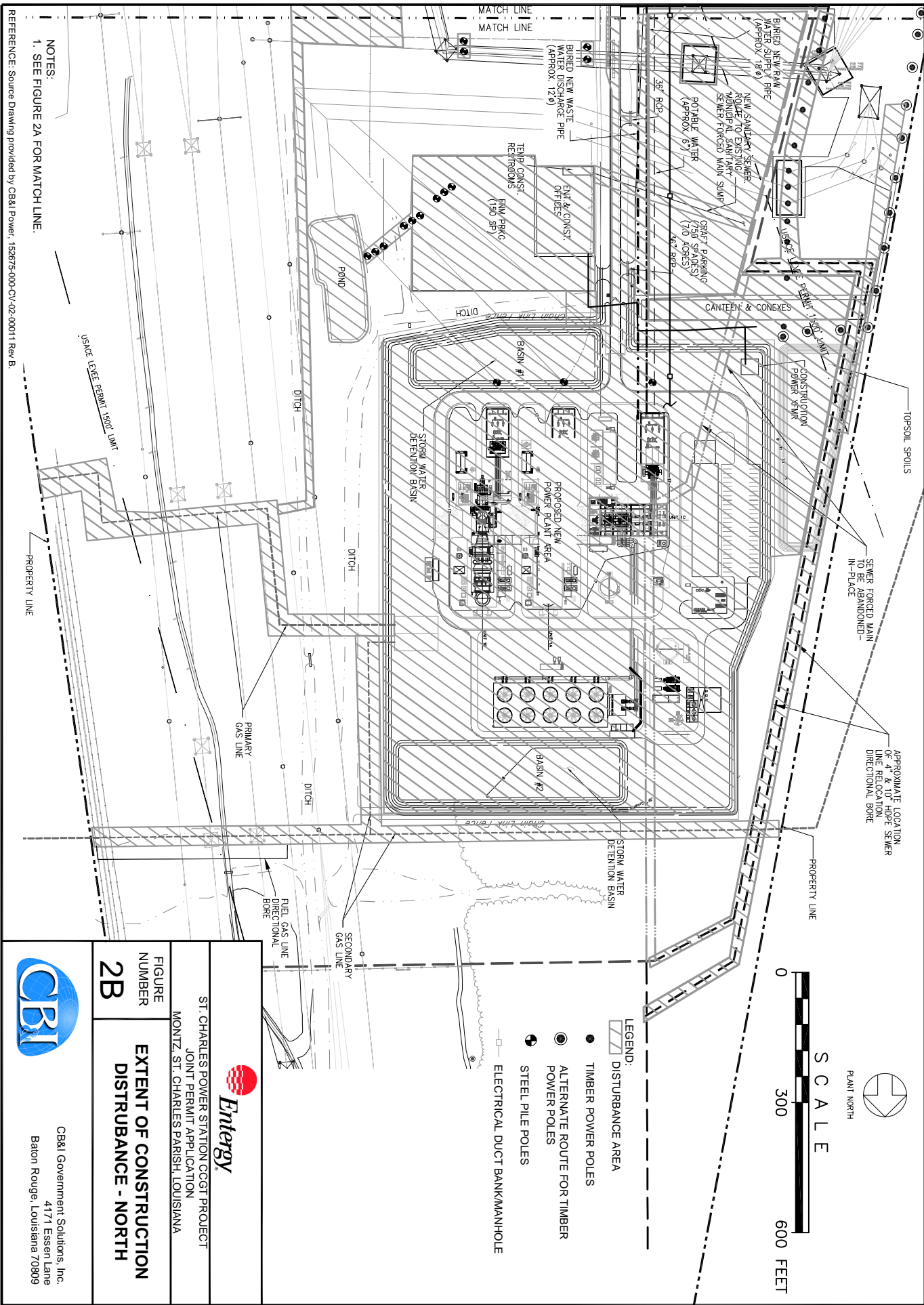
ST. CHARLES POWER STATION COG PROJECT  
 JOINT PERMIT APPLICATION  
 MONTZ, ST. CHARLES PARISH, LOUISIANA

FIGURE NUMBER  
**2A-1**

**EXTENT OF CONSTRUCTION  
 DISTURBANCE - SOUTHEAST**

CB&I Government Solutions, Inc.  
 4171 Essen Lane  
 Baton Rouge, Louisiana 70809

OFFICE	DRAWN BY	CHECKED BY	APPROVED BY	DRAWING NUMBER
BTR	D. COMEAUX	09/17/15	CP	09/30/15
			DCS	09/30/15
				scps_152720_A34



**ST. CHARLES POWER STATION CCGT PROJECT**  
JOINT PERMIT APPLICATION  
MONTZ, ST. CHARLES PARISH, LOUISIANA

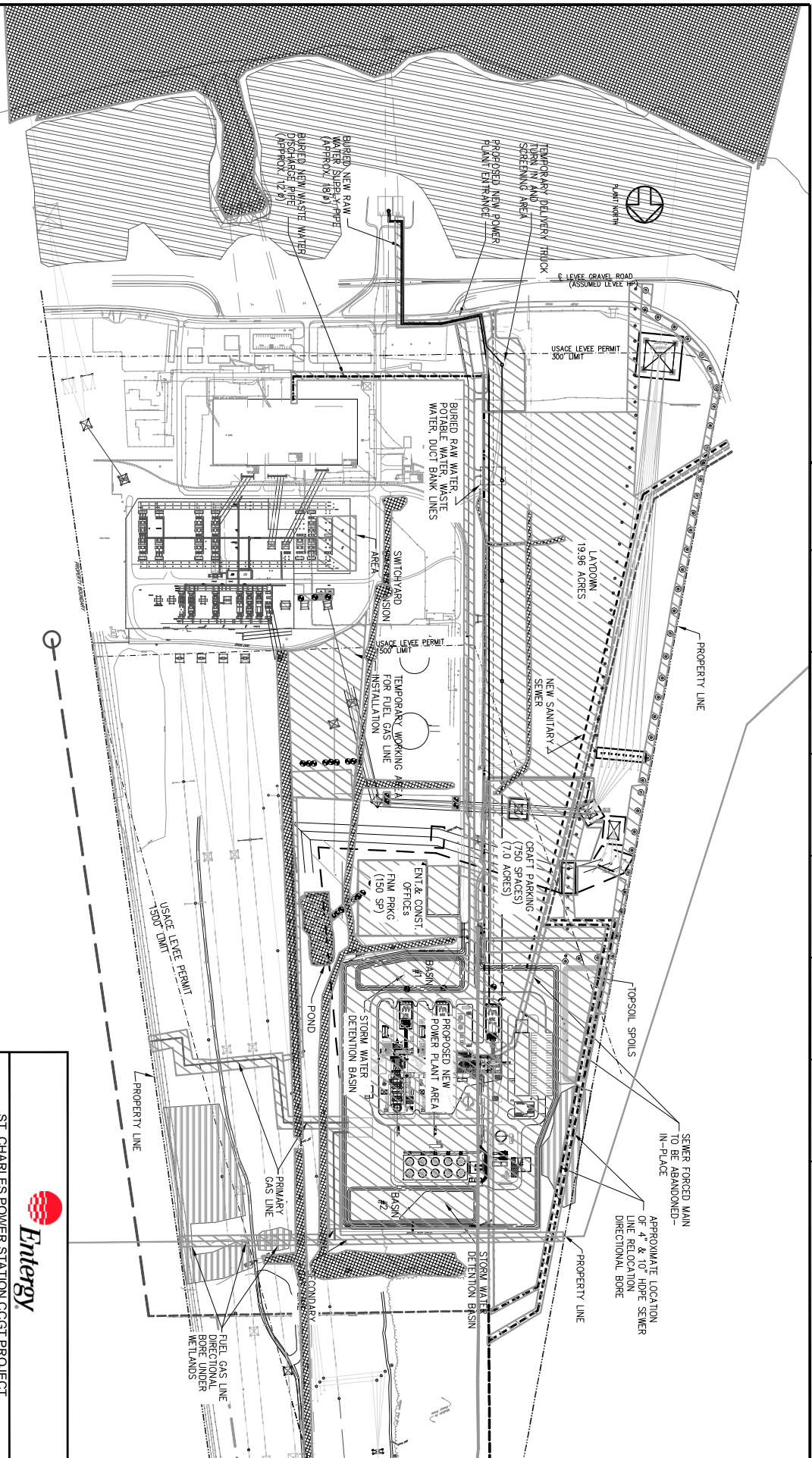
**FIGURE NUMBER**  
**2B**

**EXTENT OF CONSTRUCTION DISTURBANCE - NORTH**

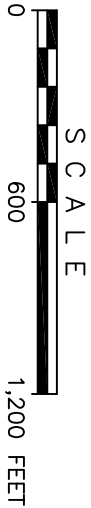
CB&I Government Solutions, Inc.  
4177 Essen Lane  
Baton Rouge, Louisiana 70809



DRAWN BY		CHECKED BY		APPROVED BY		DRAWING
OFFICE						NUMBER
BTR	D. COMEAUX	10/15/15	CP	10/16/15	DSC	10/16/15
						scps_152720_A57



NOTES:  
1. See Figures 2A and 2B for more detail.



- LEGEND:
- DISTURBANCE AREA
  - TIMBER POWER POLES
  - ALTERNATE ROUTE FOR TIMBER POWER POLES
  - STEEL POLE POLES

- WATERS OF THE US
- PERMANENT IMPACT TO WATERS OF THE US (0.89 ACRES)
- TEMPORARY IMPACT TO WATERS OF THE US (0.58 ACRES)
- WETLANDS
- MIXED WETLAND

ST. CHARLES POWER STATION CCGT PROJECT  
JOINT PERMIT APPLICATION  
MONTZ, ST. CHARLES PARISH, LOUISIANA

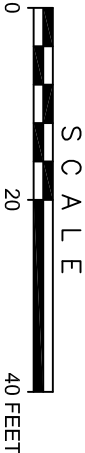
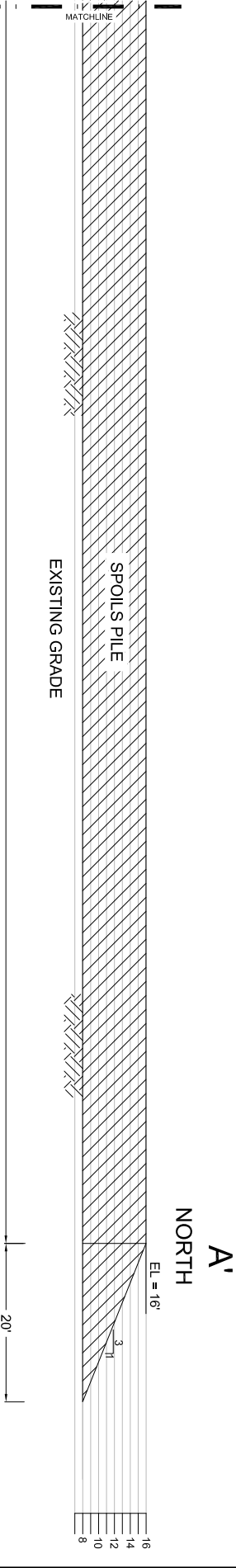
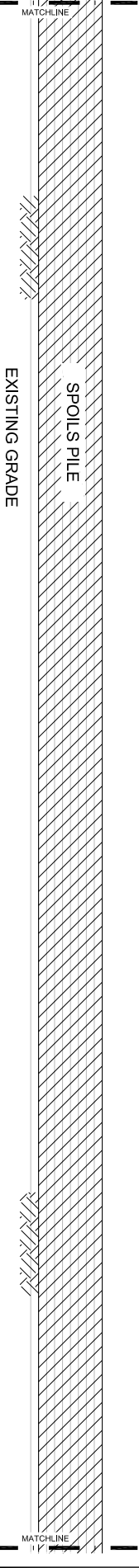
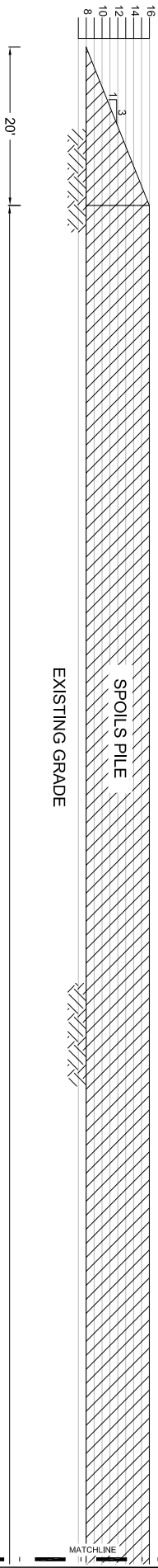
FIGURE NUMBER  
**2C**

**EXTENT OF CONSTRUCTION DISTURBANCE**




DRAWN BY		CHECKED BY		APPROVED BY		DRAWING
OFFICE						
BTR	D. COMEAUX	09/10/15	CP	09/30/15	DCS	09/30/15
						NUMBER
						scps_152720_A28

A  
SOUTH



NOTES:  
1. SEE FIGURE 6A FOR SECTION A-A' LOCATION.

REFERENCE: Source Drawing provided by CB&I Power, 152875-000-CV-03-00035 Rev B.




ST. CHARLES POWER STATION CCGT PROJECT  
JOINT PERMIT APPLICATION  
MONTZ, ST. CHARLES PARISH, LOUISIANA

FIGURE  
NUMBER

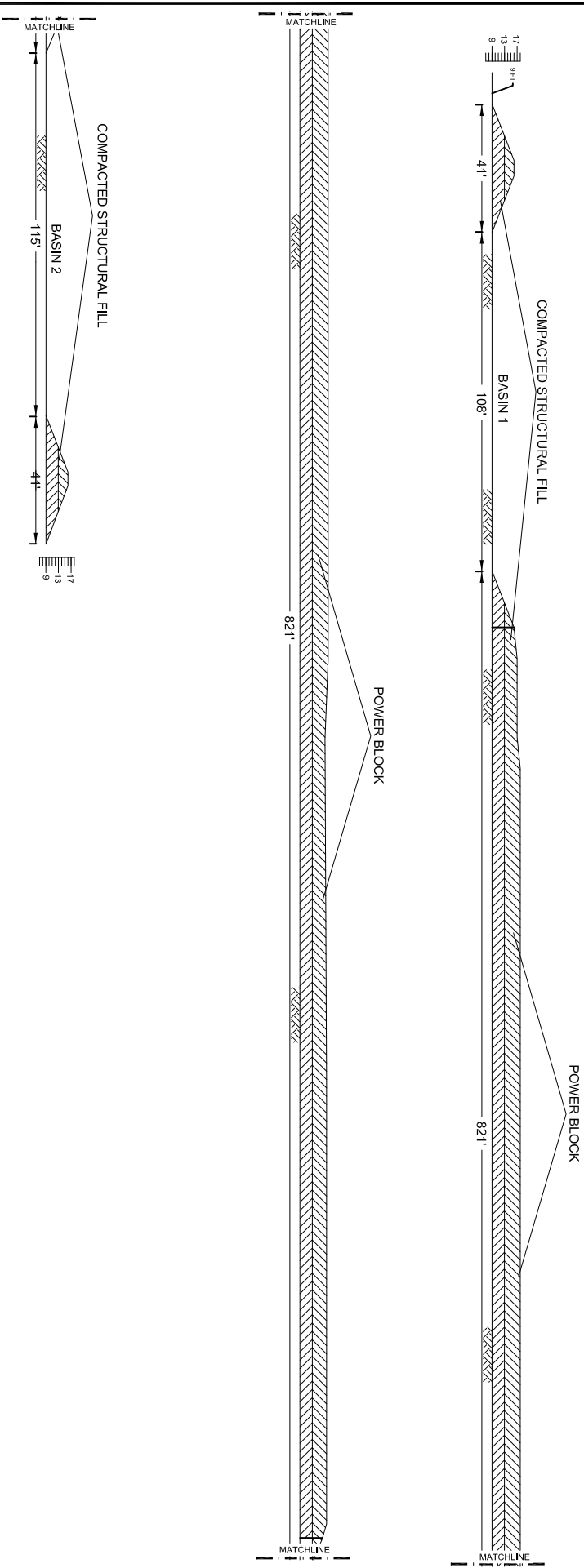
6B

SPOILS PILE SECTION



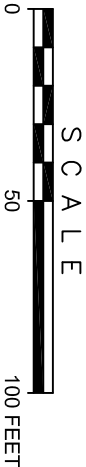
CB&I Government Solutions, Inc.  
4171 Essen Lane  
Baton Rouge, Louisiana 70809

OFFICE	DRAWN BY	CHECKED BY	APPROVED BY	DRAWING NUMBER
BTR	D. COMEAUX	09/10/15	CP	09/30/15
			DCS	09/30/15
				scps_152720_A44



- LEGEND:
- 1ST LIFT
  - 2ND LIFT
  - NATURAL GRADE

- NOTES:
1. SLOPES ARE 3H:1V.
  2. ALL ELEVATIONS ARE IN NAD 88 VERTICAL DATUM
  3. PLANT YARD ELEVATION = 17'-0" (NOMINAL)
  4. SEE FIGURE 9A FOR SECTION A-A' LOCATION



ST. CHARLES POWER STATION CCGT PROJECT  
JOINT PERMIT APPLICATION  
MONTZ, ST. CHARLES PARISH, LOUISIANA

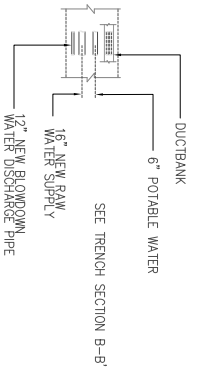
FIGURE NUMBER  
**9B**

**POWER BLOCK  
GRADING SECTION**

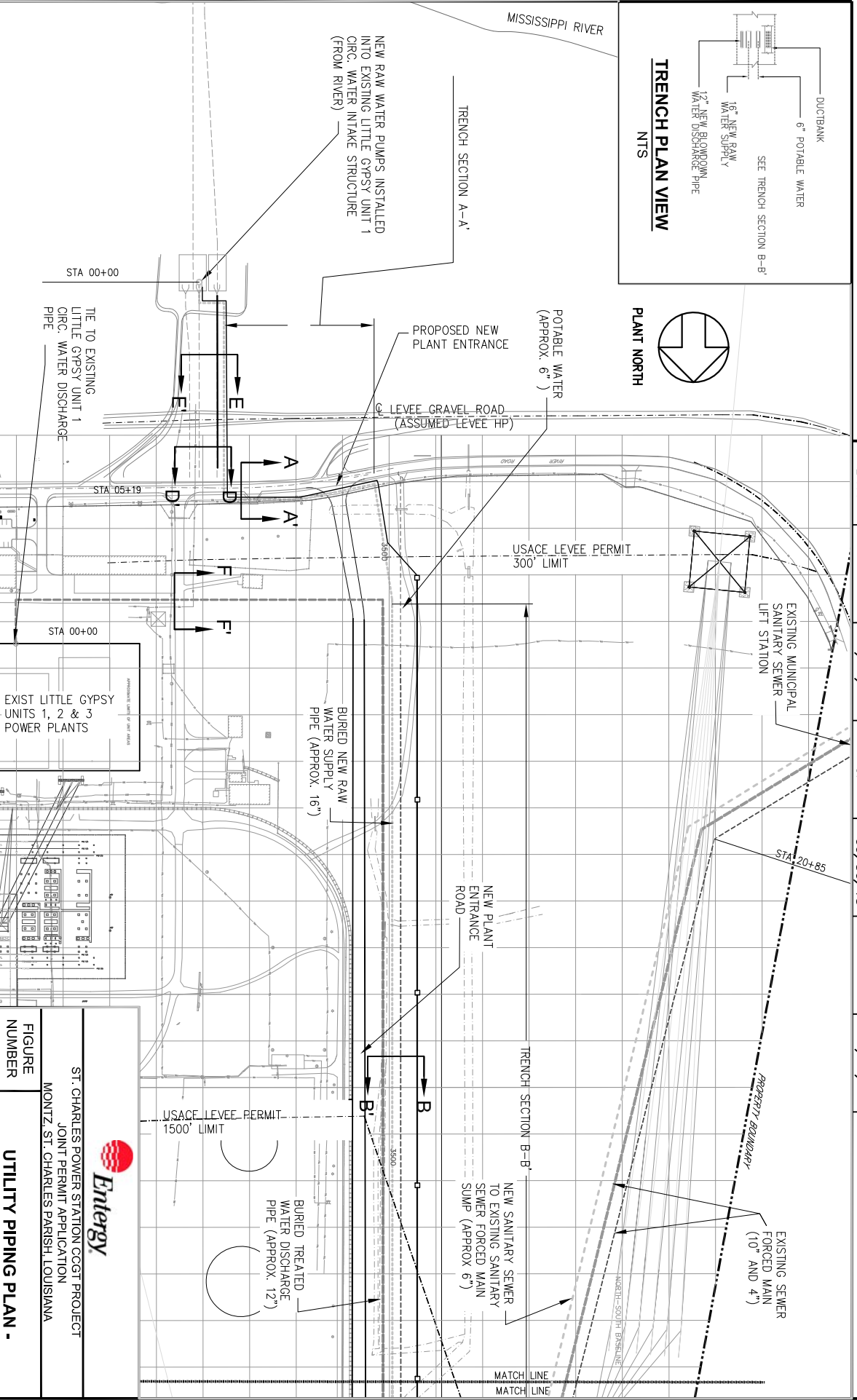
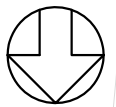


CB&I Government Solutions, Inc.  
4171 Essen Lane  
Baton Rouge, Louisiana 70809

OFFICE	DRAWN BY	CHECKED BY	APPROVED BY	DRAWING
BTR	D. COMEAUX	CP	DCS	scps_152720_A25
	09/15/15	09/30/15	09/30/15	NUMBER



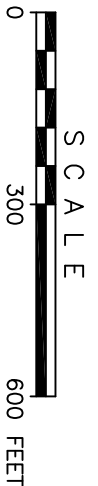
**TRENCH PLAN VIEW**  
NTS



**LEGEND:**  
—○—○— ELECTRICAL DUCT BANK/MANHOLE

**NOTES:**  
1. SEE FIGURES 12D AND 12E FOR PROFILE AND SECTIONS.

REFERENCE: Source Drawing provided by CB&I Power, 152675-000-CV-07-400010 Rev B.



ST. CHARLES POWER STATION CCGT PROJECT  
JOINT PERMIT APPLICATION  
MONTZ, ST. CHARLES PARISH, LOUISIANA

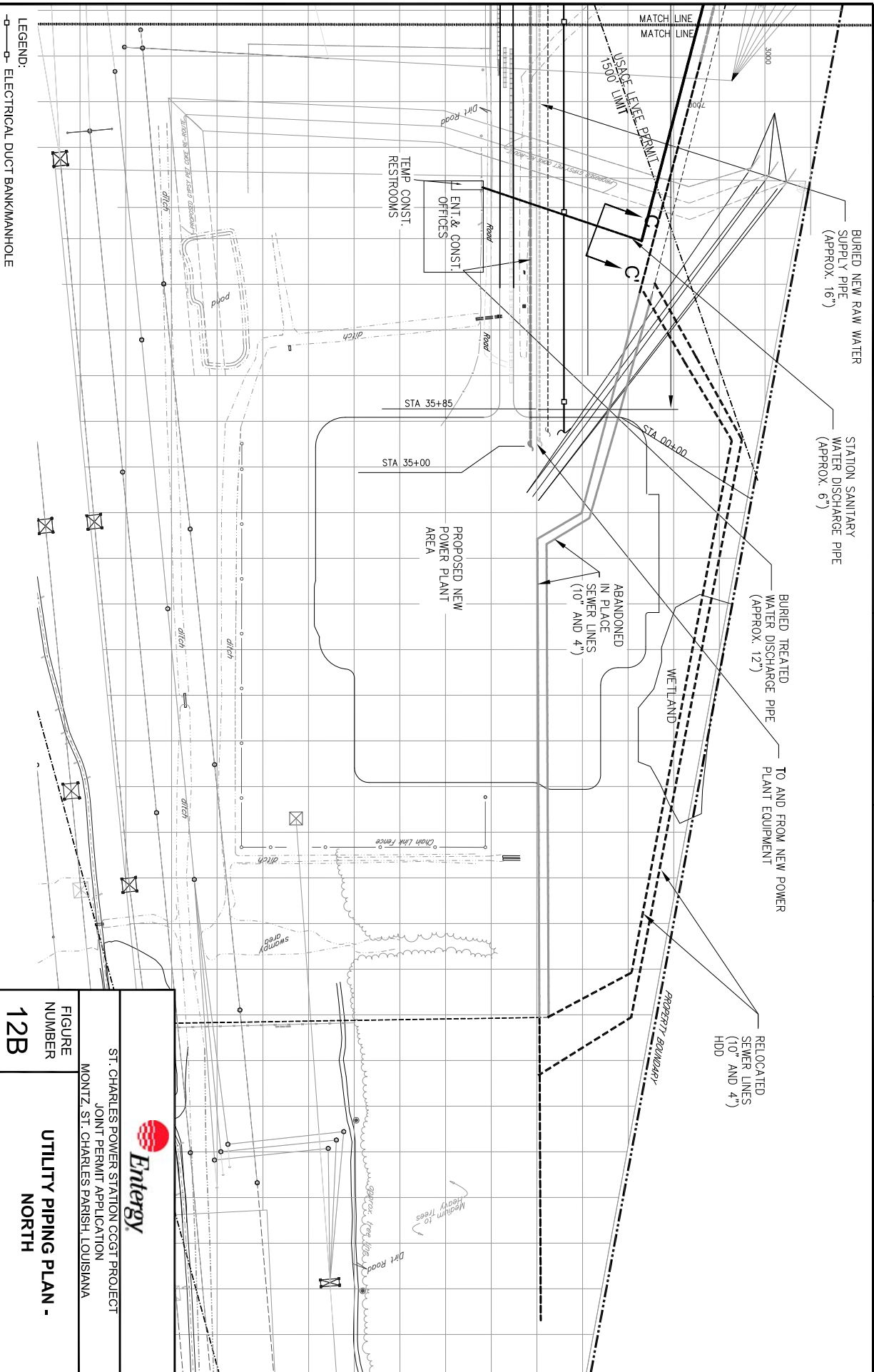
**FIGURE NUMBER**  
**12A**

**UTILITY PIPING PLAN - SOUTH**

CB&I Government Solutions, Inc.  
4177 Essen Lane  
Baton Rouge, Louisiana 70809



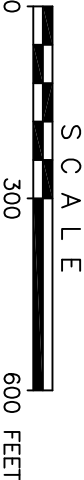
OFFICE	DRAWN BY	CHECKED BY	APPROVED BY	DRAWING NUMBER
BTR	D. COMEAUX	09/24/15	CP 09/30/15	DOS 09/30/15
				scps_152720_A46



LEGEND:  
—o—o— ELECTRICAL DUCT BANK/MANHOLE

NOTES:  
1. SEE FIGURE 12E FOR SECTION C-C.

REFERENCE: Source Drawing provided by CB&I Power, 152675-000-CV-07-400010 Rev B.

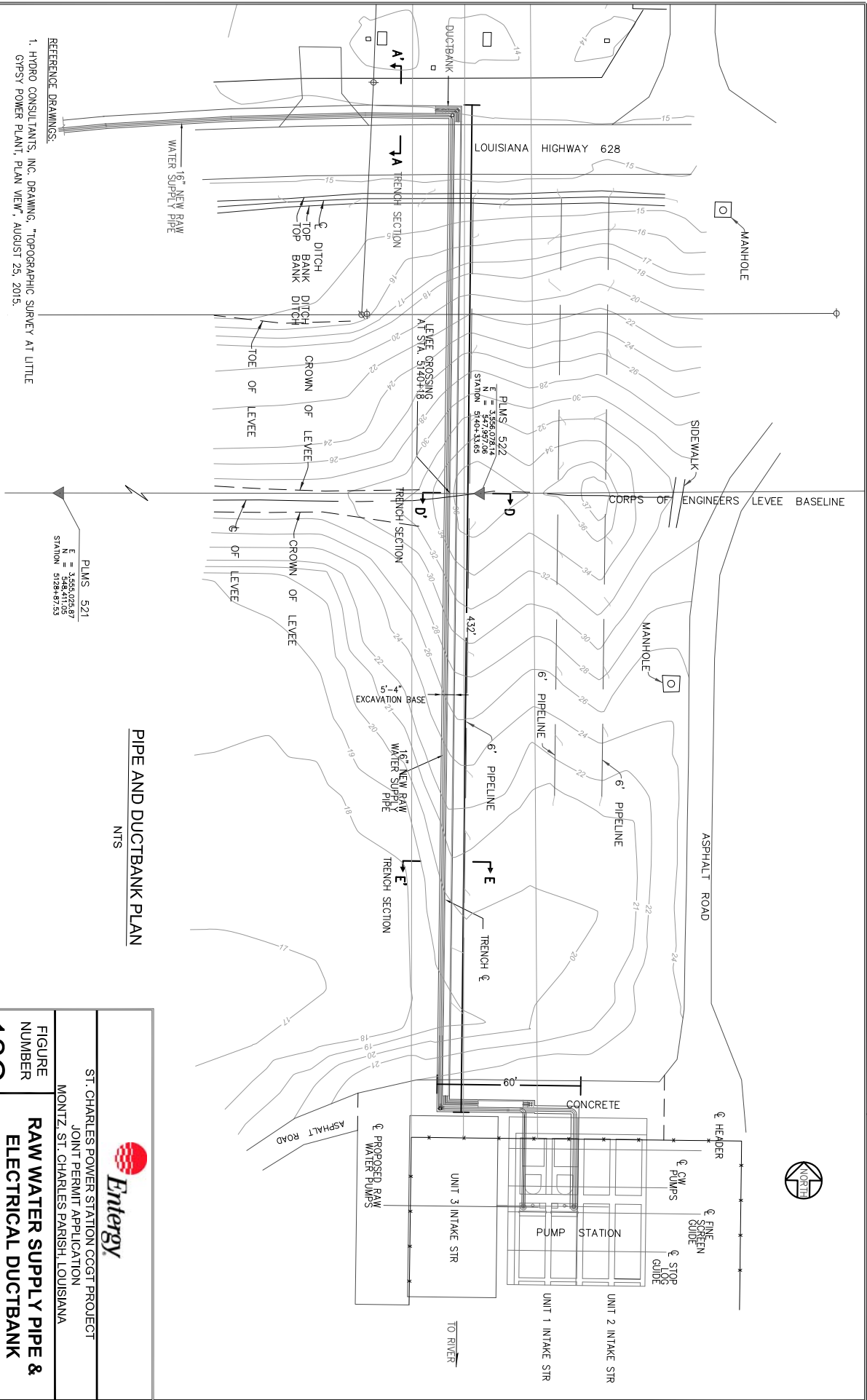


ST. CHARLES POWER STATION COGT PROJECT  
JOINT PERMIT APPLICATION  
MONTZ, ST. CHARLES PARISH, LOUISIANA

FIGURE NUMBER  
**12B**

UTILITY PIPING PLAN -  
**NORTH**

OFFICE	DRAWN BY	CHECKED BY	APPROVED BY	DRAWING NUMBER
BTR	D. COMEAUX	09/16/15	CP	09/30/15
			DCS	09/30/15
				scps_152720_A29



- REFERENCE DRAINAGES:
- HYDRO CONSULTANTS, INC. DRAWING, "TOPOGRAPHIC SURVEY AT LITTLE GYPSY POWER PLANT, PLAN VIEW", AUGUST 23, 2015.
  - HYDRO CONSULTANTS, INC. DRAWING, "TOPOGRAPHIC SURVEY AT LITTLE GYPSY POWER PLANT, PROFILES", AUGUST 23, 2015.
  - LANDMARK SURVEYING, INC., "TOPOGRAPHIC SURVEY OF LITTLE GYPSY UNIT 3 RE-POWERING PROJECT FOR ENTERGY LOUISIANA, LLC, ST. CHARLES PARISH, LOUISIANA," DRAWING NO. 08004-1, APRIL 16, 2008.

- NOTES:
- SEE FIGURE 12D FOR PROFILE VIEW.
  - SEE FIGURE 12E FOR TRENCH SECTIONS A-A', D-D' AND E-E'.
  - ORIENTATION PER USAGE REQUIREMENTS.

REFERENCE: Source Drawing provided by CB&I Power, 152675-000-01-07-00013.



ST. CHARLES POWER STATION CCGT PROJECT  
JOINT PERMIT APPLICATION  
MONITZ, ST. CHARLES PARISH, LOUISIANA

FIGURE NUMBER

12C

RAW WATER SUPPLY PIPE & ELECTRICAL DUCTBANK LEVEE CROSSING PLAN



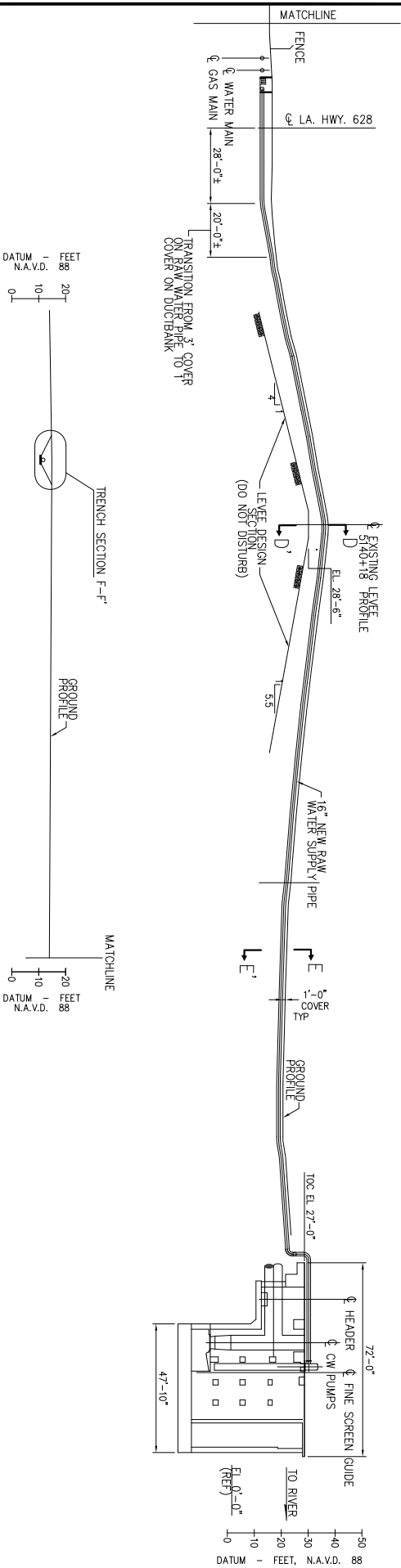
CB&I Government Solutions, Inc.  
4171 Essen Lane  
Baton Rouge, Louisiana 70809

	DRAWN BY	CHECKED BY	APPROVED BY	DRAWING NUMBER
OFFICE				
BTR	D. COMEAUX	09/16/15	CP	09/30/15
			DCS	09/30/15
				scps_152720_A31



PROTECTED SIDE

FLOOD SIDE

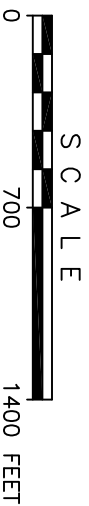


## PIPE AND DUCTBANK PROFILE

NOTES:

1. SEE FIGURE 12C FOR PLAN VIEW.
2. SEE FIGURE 12E FOR TRENCH SECTIONS A-A' THROUGH F-F'.
3. ORIENTATION PER USAGE REQUIREMENTS.

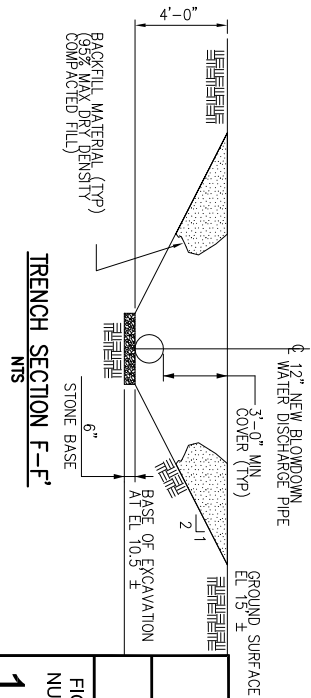
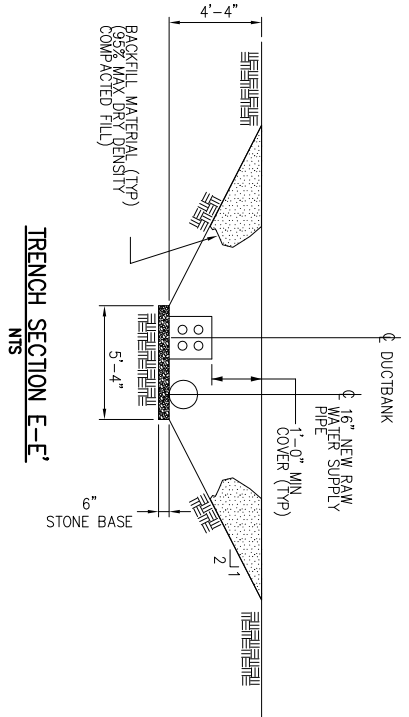
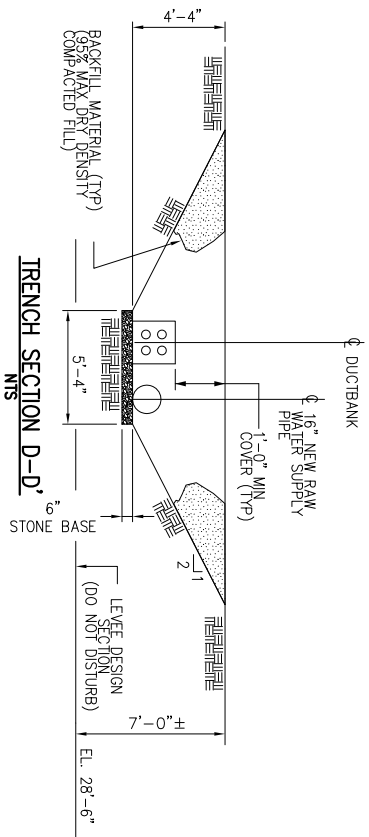
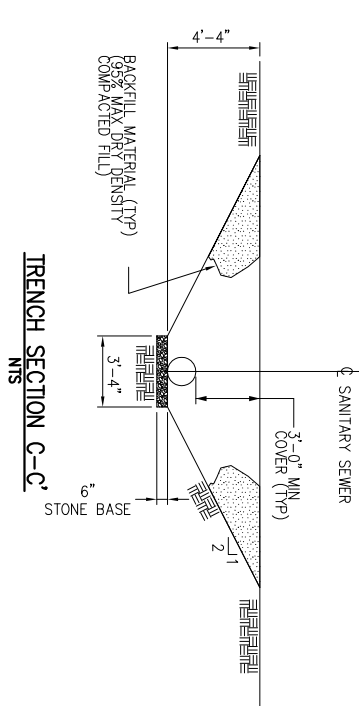
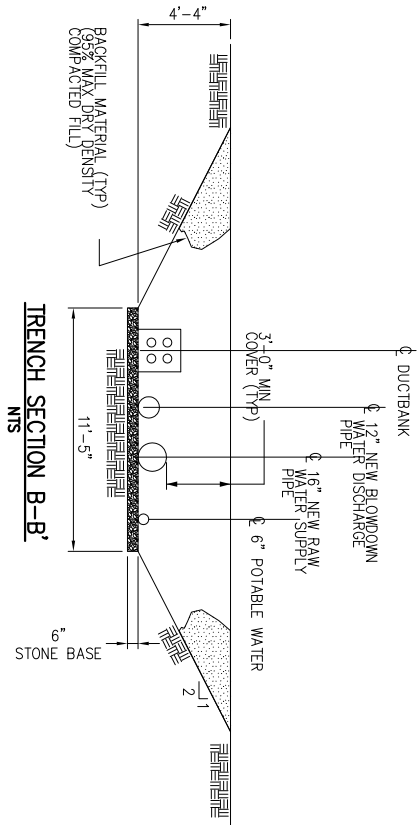
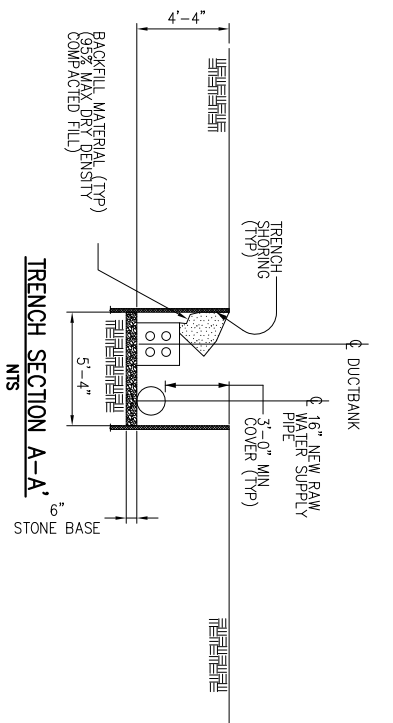
REFERENCE: Source Drawing provided by CB&I Power, 152675-000-CV-07-00014 REV C.



 <b>Entergy</b>	
ST. CHARLES POWER STATION COGST PROJECT JOINT PERMIT APPLICATION MONTZ, ST. CHARLES PARISH, LOUISIANA	
FIGURE NUMBER <b>12D</b>	<b>RAW WATER SUPPLY PIPE &amp; ELECTRICAL DUCTBANK LEEVE CROSSING PROFILE</b>



OFFICE	DRAWN BY	CHECKED BY	APPROVED BY	DRAWING NUMBER
BTR	D. COMEAUX	CP	DCS	scps_152720_A30
	09/16/15	09/30/15	09/30/15	



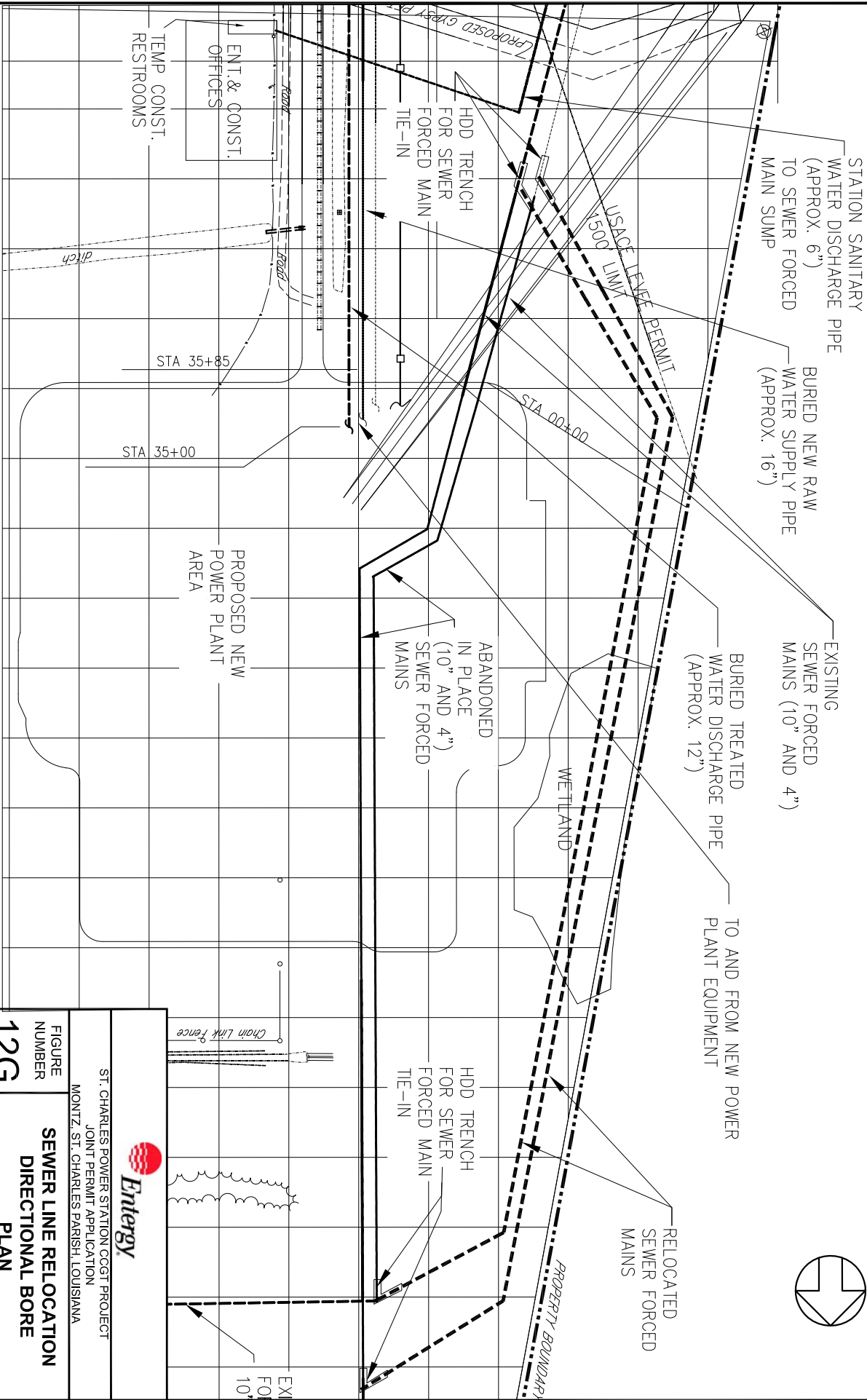
- NOTES:
1. SEE FIGURE 12C FOR LOCATION OF SECTIONS A-A', D-D' AND E-E' ON PLAN VIEW.
  2. SEE FIGURE 12D FOR LOCATION OF SECTIONS D-D', E-E' AND F-F' ON PROFILE VIEW.
  3. SEE FIGURE 12A FOR SECTIONS A-A', B-B', D-D' AND E-E'.
  4. SEE FIGURE 12B FOR LOCATION OF SECTION C-C'.

	
ST. CHARLES POWER STATION COGT PROJECT JOINT PERMIT APPLICATION MONTZ, ST. CHARLES PARISH, LOUISIANA	
FIGURE NUMBER <b>12E</b>	UTILITY PIPING TRENCH SECTIONS



CB&I Government Solutions, Inc.  
4171 Essen Lane  
Baton Rouge, Louisiana 70809

OFFICE	DRAWN BY	CHECKED BY	APPROVED BY		DRAWING
BTR	D. COMEAU	09/17/15	CP	09/30/15	DCS
					09/30/15
					NUMBER
					scps_152720_A38



- NOTES:
1. SEE FIGURE 12H FOR PROFILE VIEW.
  2. SEE FIGURES 12A AND 12B FOR LOCATION OF SEWER FORCED MAIN.

REFERENCE: Source Drawing provided by CB&I Power, 152875-000-CV-07-00010 Rev B.

ST. CHARLES POWER STATION CCGT PROJECT  
JOINT PERMIT APPLICATION  
MONTZ, ST. CHARLES PARISH, LOUISIANA

FIGURE NUMBER

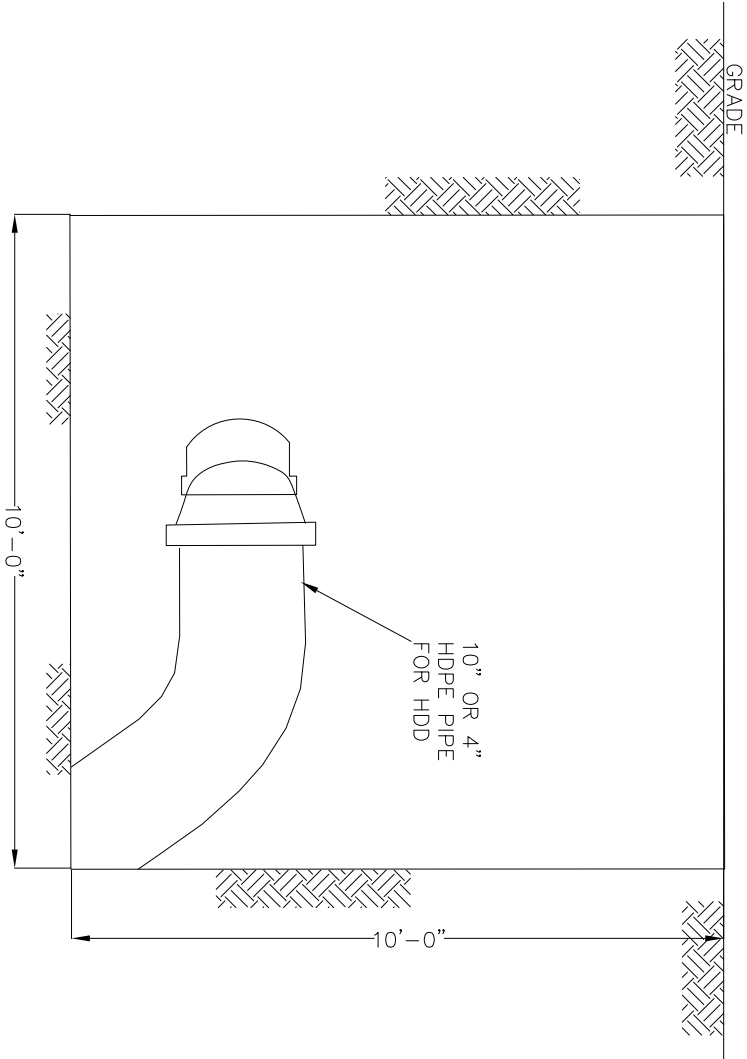
**12G**

**SEWER LINE RELOCATION  
DIRECTIONAL BORE  
PLAN**



CB&I Government Solutions, Inc.  
4171 Essen Lane  
Baton Rouge, Louisiana 70809

DRAWN BY		CHECKED BY		APPROVED BY		DRAWING
OFFICE						
BTR	D. COMEAUX	09/17/15	CP	09/30/15	DCS	09/30/15
						NUMBER
						scps_152720_A39



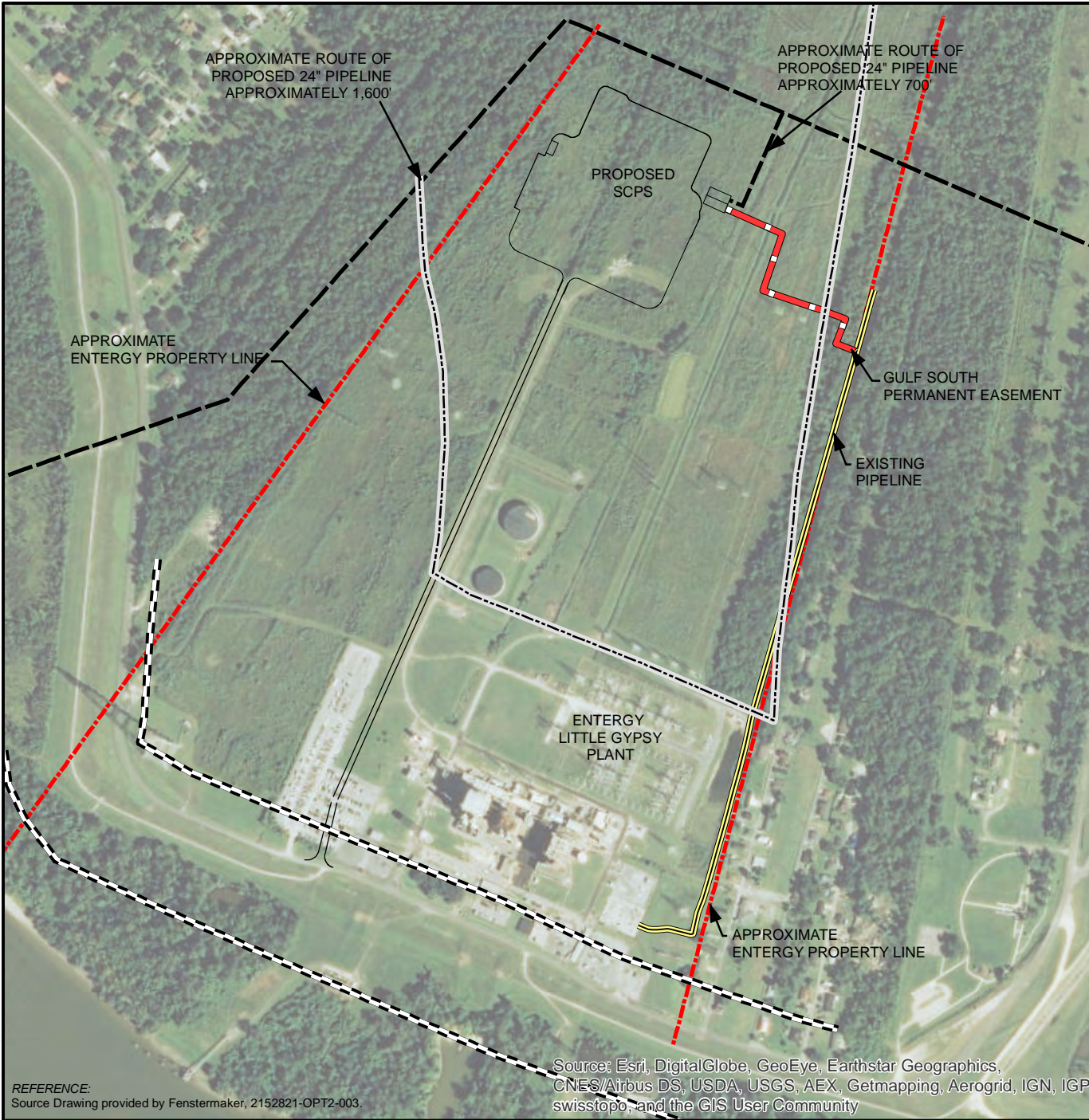
NOTES:  
 1. SEE FIGURE 12G FOR PROFILE.  
 2. SEE FIGURES 12A AND 12B FOR LOCATION OF SEWER FORCED MAIN.

 ST. CHARLES POWER STATION CCGT PROJECT JOINT PERMIT APPLICATION MONTZ, ST. CHARLES PARISH, LOUISIANA	
FIGURE NUMBER <b>12H</b>	<b>RELOCATED SEWER FORCED MAIN TIE-IN PROFILE</b>



CB&I Government Solutions, Inc.  
 4171 Essen Lane  
 Baton Rouge, Louisiana 70809





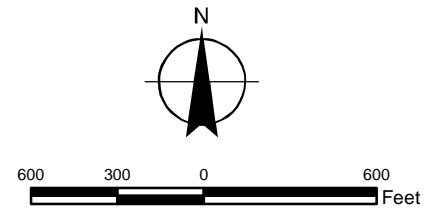
REFERENCE:  
Source Drawing provided by Fenstermaker, 2152821-OPT2-003.

Source: Esri, DigitalGlobe, GeoEye, Earthstar Geographics,  
CNES/Airbus DS, USDA, USGS, AEX, Getmapping, Aerogrid, IGN, IGP,  
swisstopo, and the GIS User Community

### Legend

- 300ft from Centerline of Levee
- 1500ft from Centerline of Levee
- Secondary Fuel Supply Line
- Primary Fuel Supply Line
- Existing Pipeline
- St. Charles Power Station Property Boundary

NOTES:  
1. SEE FIGURE 14B FOR DETAILS  
AND CROSS-SECTIONS.



ST. CHARLES POWER STATION CCGT PROJECT  
JOINT PERMIT APPLICATION  
MONTZ, ST. CHARLES PARISH, LOUISIANA

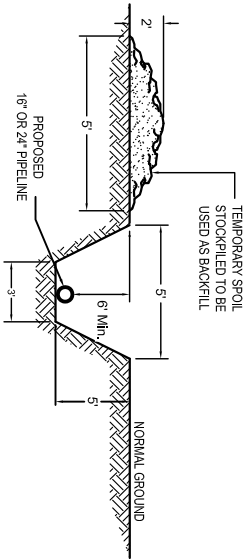
FIGURE  
NUMBER  
**14A**

**NATURAL GAS  
PIPELINE ALIGNMENTS**



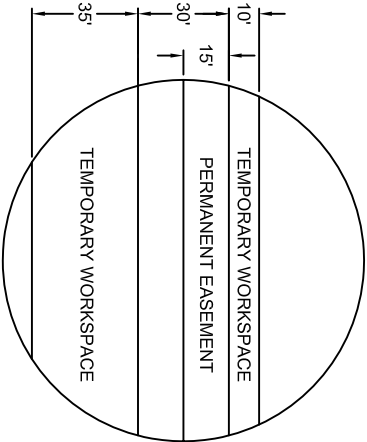
CB&I Government Solutions, Inc.  
4171 Essen Lane  
Baton Rouge, Louisiana 70809

DRAWN BY		CHECKED BY		APPROVED BY		DRAWING
OFFICE						
BTR	D. COMEAUX	09/10/15	CP	09/30/15	DCS	09/30/15
						NUMBER
						scps_152720_A24



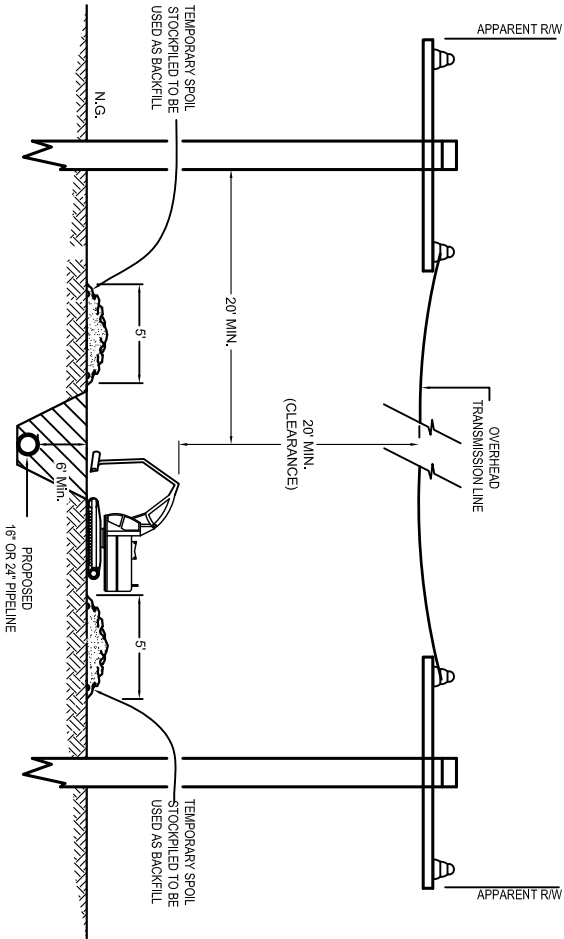
CROSS-SECTION  
TYPICAL PIPELINE TRENCH

NTS



DETAIL "A"

NTS



TYPICAL  
CROSSING POWERLINE TRENCHING DETAIL

NTS

NOTES:  
1. SEE FIGURE 14A FOR LOCATION OF GAS PIPELINES.

REFERENCE: Source Drawing provided by Fenstermaker, 2152824-OP72-002.



ST. CHARLES POWER STATION COGT PROJECT

JOINT PERMIT APPLICATION

MONTZ, ST. CHARLES PARISH, LOUISIANA

FIGURE NUMBER

14B

TYPICAL SECTIONS

NATURAL GAS PIPELINES

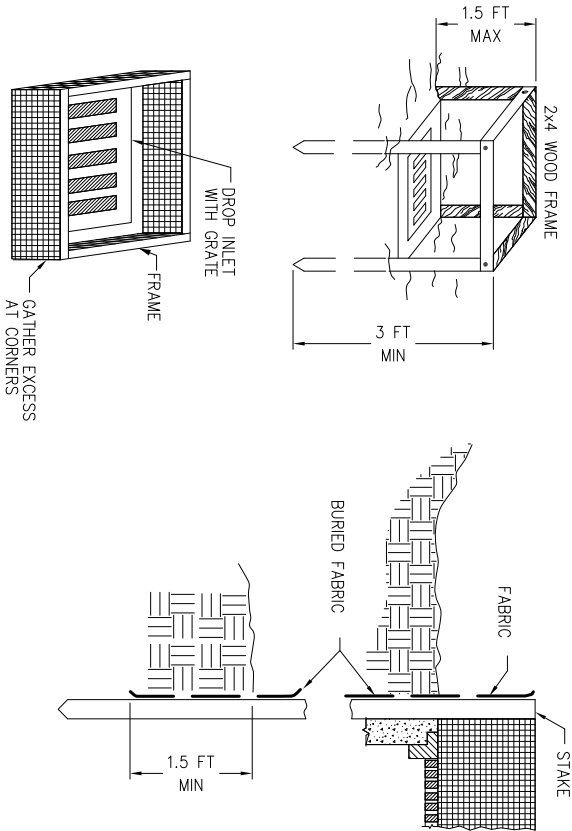


CBI Government Solutions, Inc.

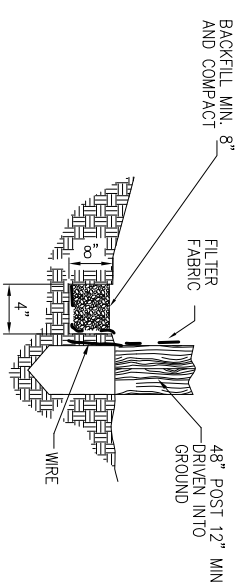
41771 Essen Lane

Baton Rouge, Louisiana 70809

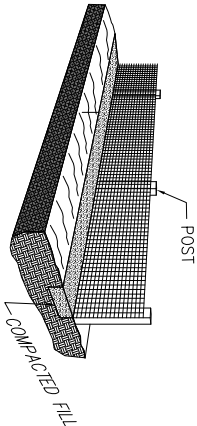
OFFICE	DRAWN BY	CHECKED BY	APPROVED BY	DRAWING NUMBER
BTR	D. COMEAUX	CP	DCS	scps_152720_A32



TEMPORARY FABRIC DROP INLET PROTECTION  
(REQUIRED AT ALL NEW STORM DRAINAGE STRUCTURES)



EXTENSION OF WIRE & FABRIC INTO TRENCH



TEMPORARY SILT FENCE

NOTES:  
1. SILT FENCING WILL BE INSTALLED AROUND ALL EXCAVATIONS  
AND EMBANKMENTS.

REFERENCE: Source Drawing provided by CB&I Power, D132602-C-SK-25113-D.



ST. CHARLES POWER STATION CCGT PROJECT  
JOINT PERMIT APPLICATION  
MONTZ, ST. CHARLES PARISH, LOUISIANA



CB&I Government Solutions, Inc.  
4171 Essen Lane  
Baton Rouge, Louisiana 70809

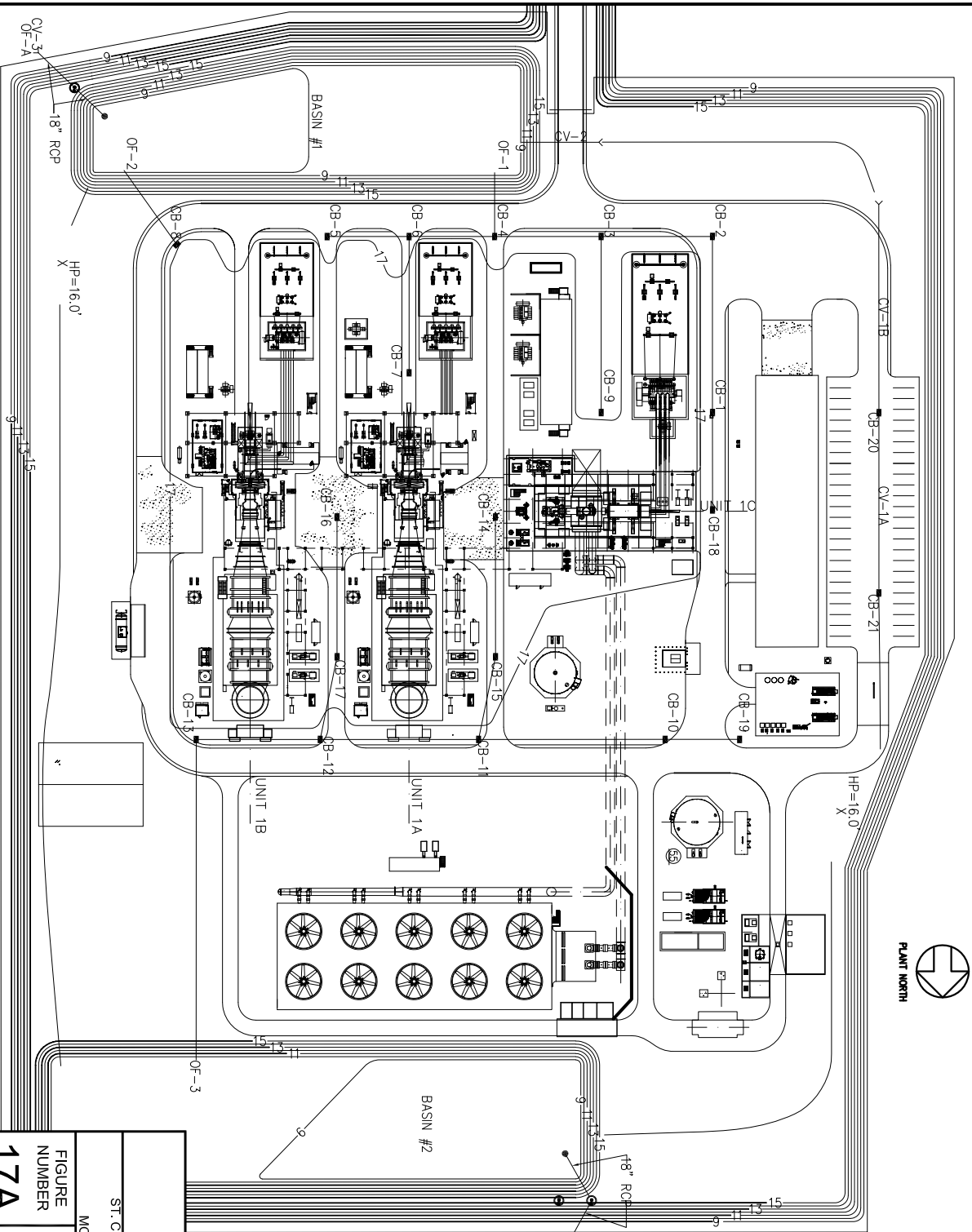
FIGURE NUMBER

16

EROSION CONTROL DETAILS



OFFICE	DRAWN BY	CHECKED BY	APPROVED BY	DRAWING
BTR	D. COMEAUX	09/11/15	CP	09/30/15
			DCS	09/30/15
				NUMBER
				scps_152720_A05



- LEGEND:
- CATCH BASIN
  - ⊙ OIL/WATER SEPARATOR
  - RISER
  - SWALE

- NOTES:
1. SLOPES ARE 3H:1V.
  2. SEE FIGURE 17B AND 17C FOR STORM WATER DRAINAGE DETAILS AND FIGURE 17D FOR OIL/WATER SEPARATOR.
  3. ALL ELEVATIONS ARE IN NAD 88 VERTICAL DATUM.
  4. PLANT YARD ELEVATION = 17'-0" (NOMINAL) CONCRETE ELEVATION = 17'-6"

ST. CHARLES POWER STATION CCGT PROJECT  
JOINT PERMIT APPLICATION  
MONTZ, ST. CHARLES PARISH, LOUISIANA

FIGURE NUMBER  
**17A**

**STORM WATER DRAINAGE PLAN**



CB&I Government Solutions, Inc.  
4171 Essen Lane  
Baton Rouge, Louisiana 70809



OFFICE	DRAWN BY	CHECKED BY	APPROVED BY	DRAWING
BTR	D. COMEAUX	09/08/15	CP	09/30/15
			DCS	09/30/15
				NUMBER
				scps_152720_A08

CATCH BASIN STRUCTURE SCHEDULE					
LABEL	RIM/GRATE ELEVATION	INLET TYPE	ELEVATION INVERT IN #1	ELEVATION INVERT IN #2	ELEVATION INVERT OUT
CB-1	16.5	DROP INLET	13.04	(N/A)	13.04
CB-2	16.5	DROP INLET	12.16	(N/A)	12.16
CB-3	16	DROP INLET	11.63	11.63	4.37
CB-4	16	DROP INLET	11.12	11.12	4.88
CB-5	16	DROP INLET	(N/A)	(N/A)	3.0
CB-6	16	DROP INLET	12.1	12.1	3.9
CB-7	16.5	DROP INLET	(N/A)	(N/A)	3.0
CB-8	16	DROP INLET	(N/A)	(N/A)	3.0
CB-9	16.5	DROP INLET	(N/A)	(N/A)	3.0
CB-10	16	DROP INLET	(N/A)	(N/A)	3.5
CB-11	16	DROP INLET	11.61	11.61	4.39
CB-12	16	DROP INLET	10.85	10.85	5.15
CB-13	16	DROP INLET	10.26	(N/A)	10.26
CB-14	16.5	DROP INLET	(N/A)	(N/A)	3.0
CB-15	16.5	DROP INLET	12.83	(N/A)	12.83
CB-16	16.5	DROP INLET	(N/A)	(N/A)	3.0
CB-17	16.5	DROP INLET	12.83	(N/A)	12.83
CB-18	16.5	DROP INLET	N/A	(N/A)	3.0
CB-19	16.5	DROP INLET	12.83	(N/A)	12.86
CB-20	16.0	DROP INLET	11.65	(N/A)	11.65

DRAINAGE PIPE SCHEDULE					
LABEL	FROM	TO	INVERT (UPSTREAM)	INVERT (DOWNSTREAM)	DIA.METER (IN)
CO-26	CB-1	CB-2	13.50	12.16	18
CO-27	CB-2	CB-3	12.16	11.63	24
CO-28	CB-3	CB-4	11.63	11.12	30
CO-29	CB-4	OF-1	11.12	9.00	30
CO-30	CB-9	CB-3	13.50	11.63	18
CO-31	CB-5	CB-6	13.00	12.10	18
CO-32	CB-6	CB-4	12.10	11.12	24
CO-33	CB-7	CB-6	13.50	12.10	18
CO-34	CB-10	CB-11	12.50	11.61	24
CO-35	CB-11	CB-12	11.61	10.85	30
CO-36	CB-12	CB-13	10.85	10.26	30
CO-37	CB-13	OF-3	10.26	9.00	30
CO-38	CB-14	CB-15	13.50	12.83	18
CO-39	CB-15	CB-11	12.83	11.61	24
CO-40	CB-16	CB-17	13.50	12.83	18
CO-41	CB-17	CB-12	12.83	10.85	24
CO-42	CB-8	OF-2	13.00	9.00	18
CO-43	CB-18	CB-1	13.5	13.04	18
CO-44	CB-19	CB-10	12.86	12.5	18

NOTES:  
1. FOR STORM WATER DRAINAGE PLAN VIEW AND SECTION, SEE FIGURES 17A AND 17B, RESPECTIVELY.



ST. CHARLES POWER STATION CCGT PROJECT  
JOINT PERMIT APPLICATION  
MONTZ, ST. CHARLES PARISH, LOUISIANA

FIGURE NUMBER

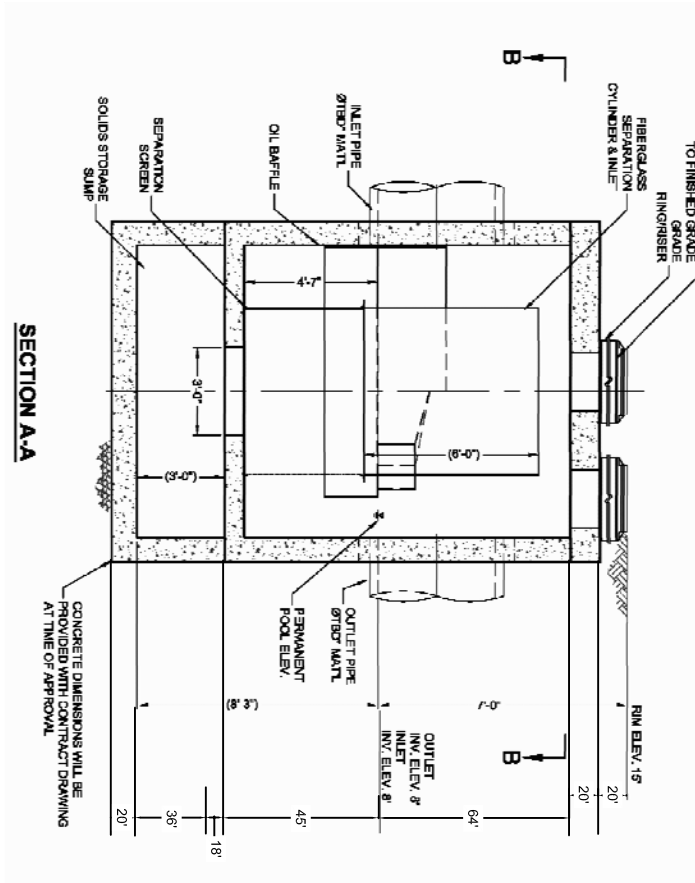
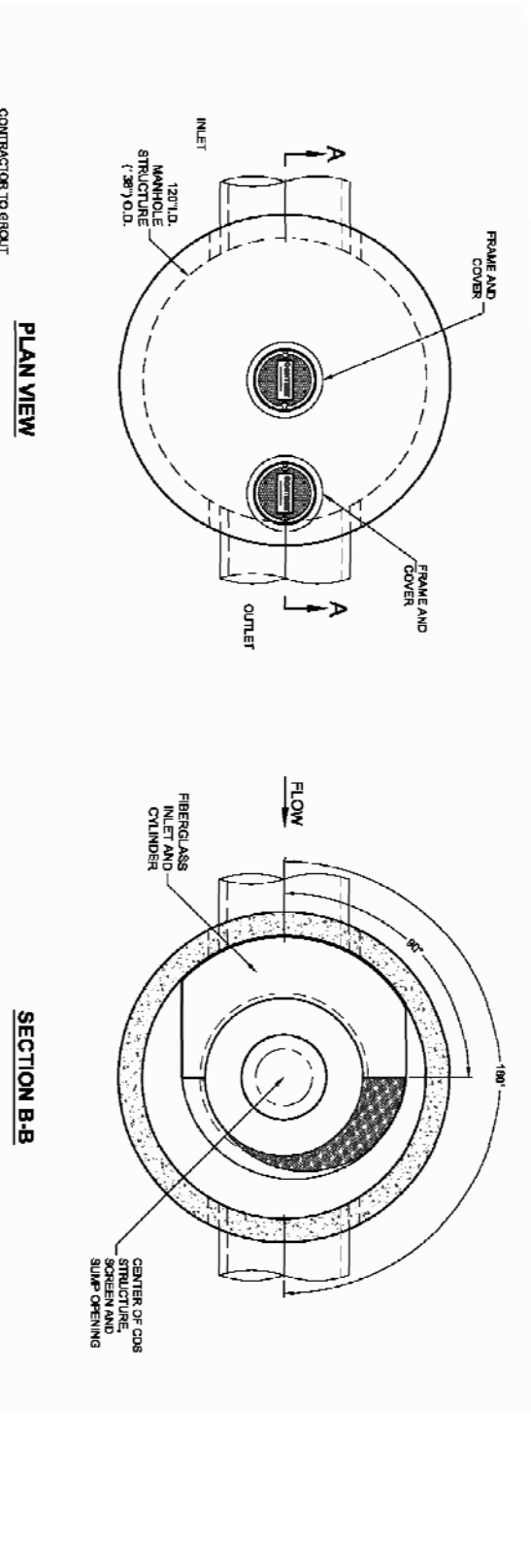
17C

STORM WATER DRAINAGE SCHEDULE





CB&I Government Solutions, Inc.  
4171 Essen Lane  
Baton Rouge, Louisiana 70809

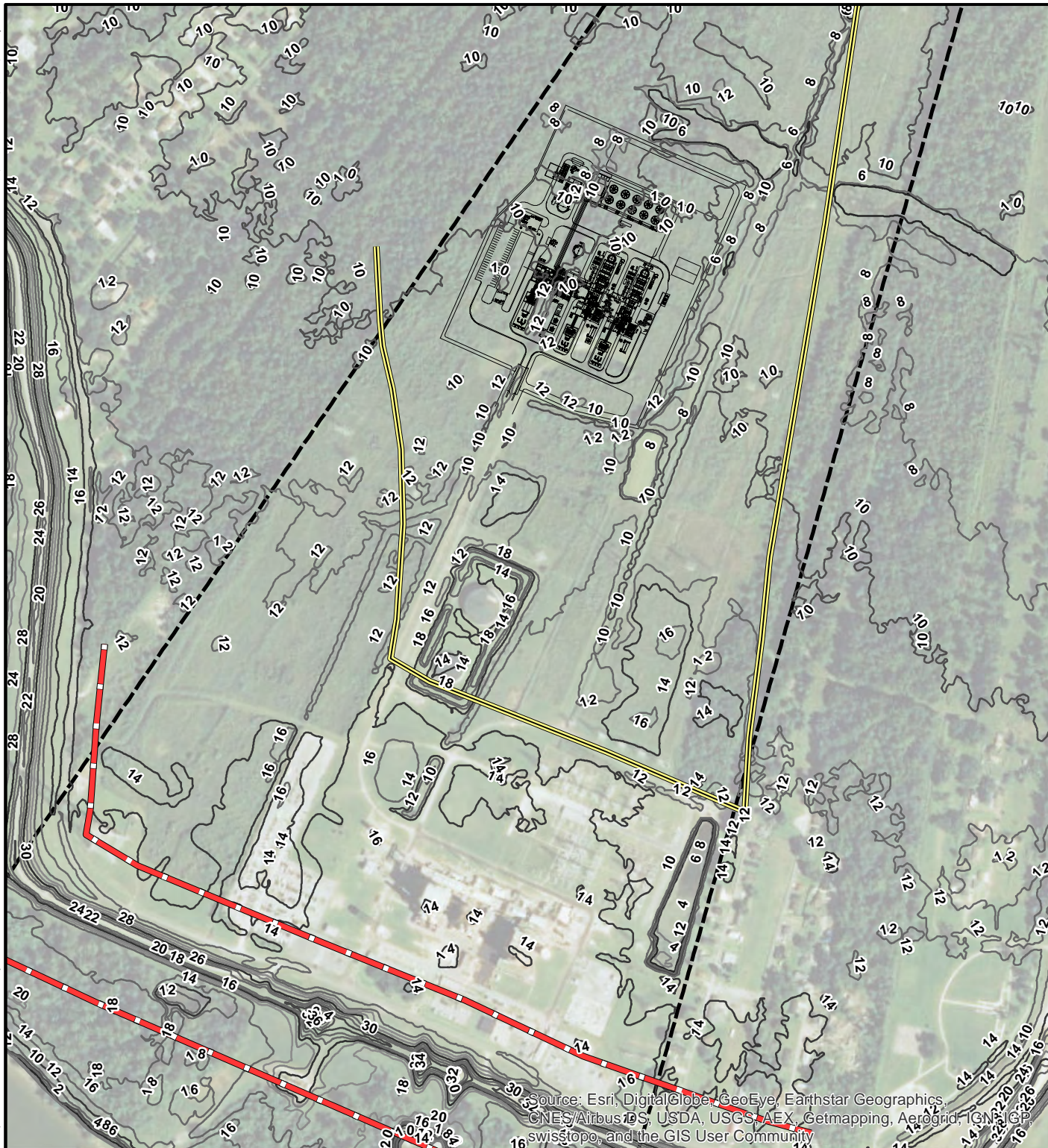
OFFICE	DRAWN BY	CHECKED BY	APPROVED BY	DRAWING
BTR	D. COMEAUX	09/18/15	CP	09/30/15
			DCS	09/30/15
				NUMBER
				scps_152720_A45



NOTES:  
1. SEE FIGURE 17A FOR LOCATION OF OIL/WATER SEPARATORS.

	
ST. CHARLES POWER STATION CCGT PROJECT JOINT PERMIT APPLICATION MONTZ, ST. CHARLES PARISH, LOUISIANA	
FIGURE NUMBER <b>17D</b>	<b>STORM WATER OIL/WATER SEPARATOR</b>
<div>  <div>           CB&amp;I Government Solutions, Inc.            4171 Essen Lane            Baton Rouge, Louisiana 70809         </div> </div>	

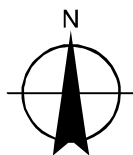




Source: Esri, DigitalGlobe, GeoEye, Earthstar Geographics, CNES/Airbus DS, USDA, USGS, AEX, Getmapping, Aerogrid, IGN, IGP, swisstopo, and the GIS User Community

### Legend

- 300ft from center of Levee
- 1500ft from center of Levee
- Property Boundary



600 300 0 600 Feet

REFERENCE:  
LaPlace SW, LIDAR shapefile was downloaded from  
<http://atlas.lsu.edu/lidar>



**Entergy**

ST. CHARLES POWER STATION CCGT PROJECT  
JOINT PERMIT APPLICATION  
MONTZ, ST. CHARLES PARISH, LOUISIANA

FIGURE  
NUMBER

**19**

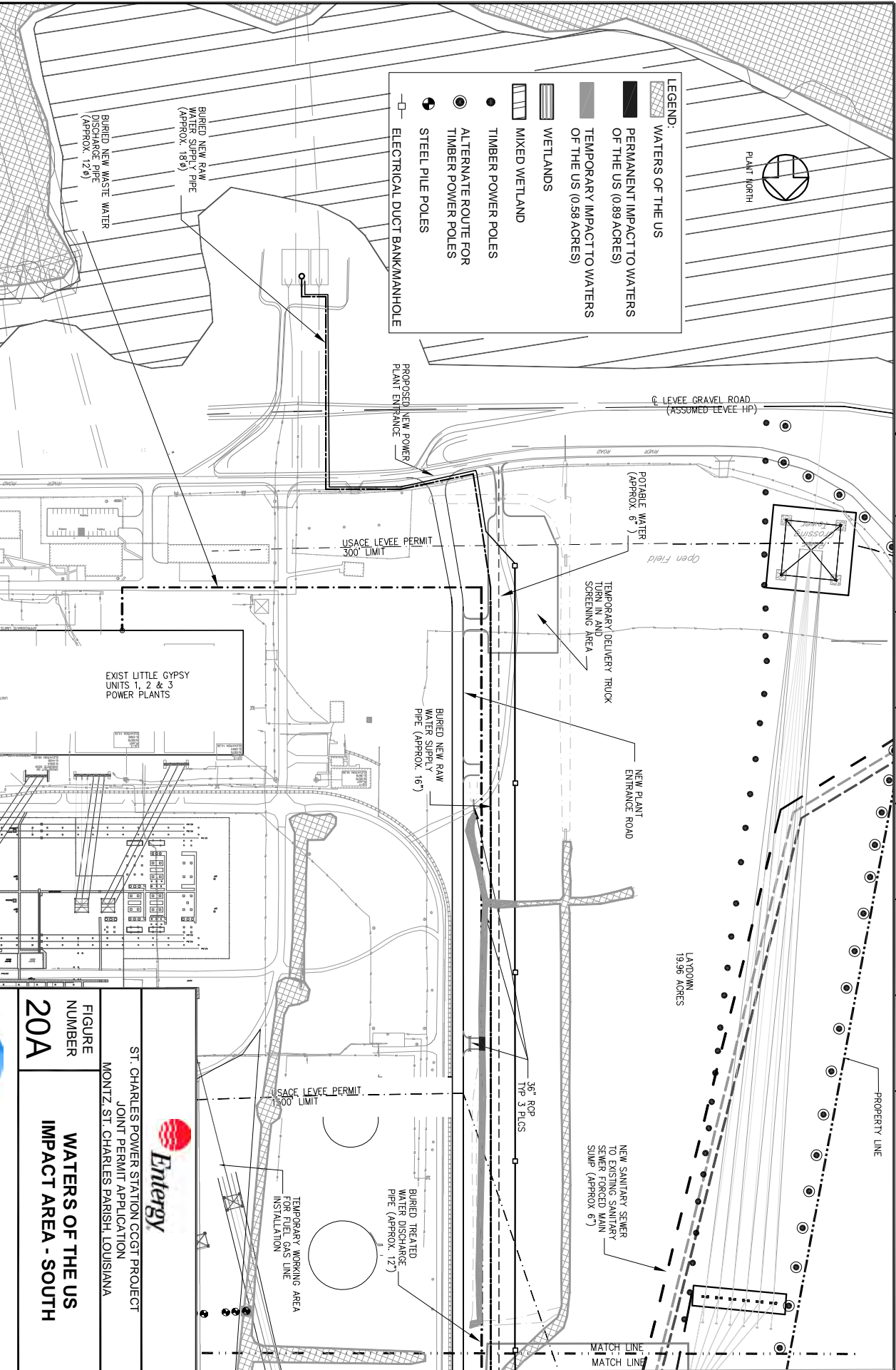
**LIDAR ELEVATIONS**



CB&I Government Solutions, Inc.  
4171 Essen Lane  
Baton Rouge, Louisiana 70809



OFFICE	DRAWN BY	CHECKED BY	APPROVED BY	DRAWING NUMBER
BTR	D. COMEAUX	CP	DCS	scps_152720_A47
	09/17/15	09/30/15	09/30/15	



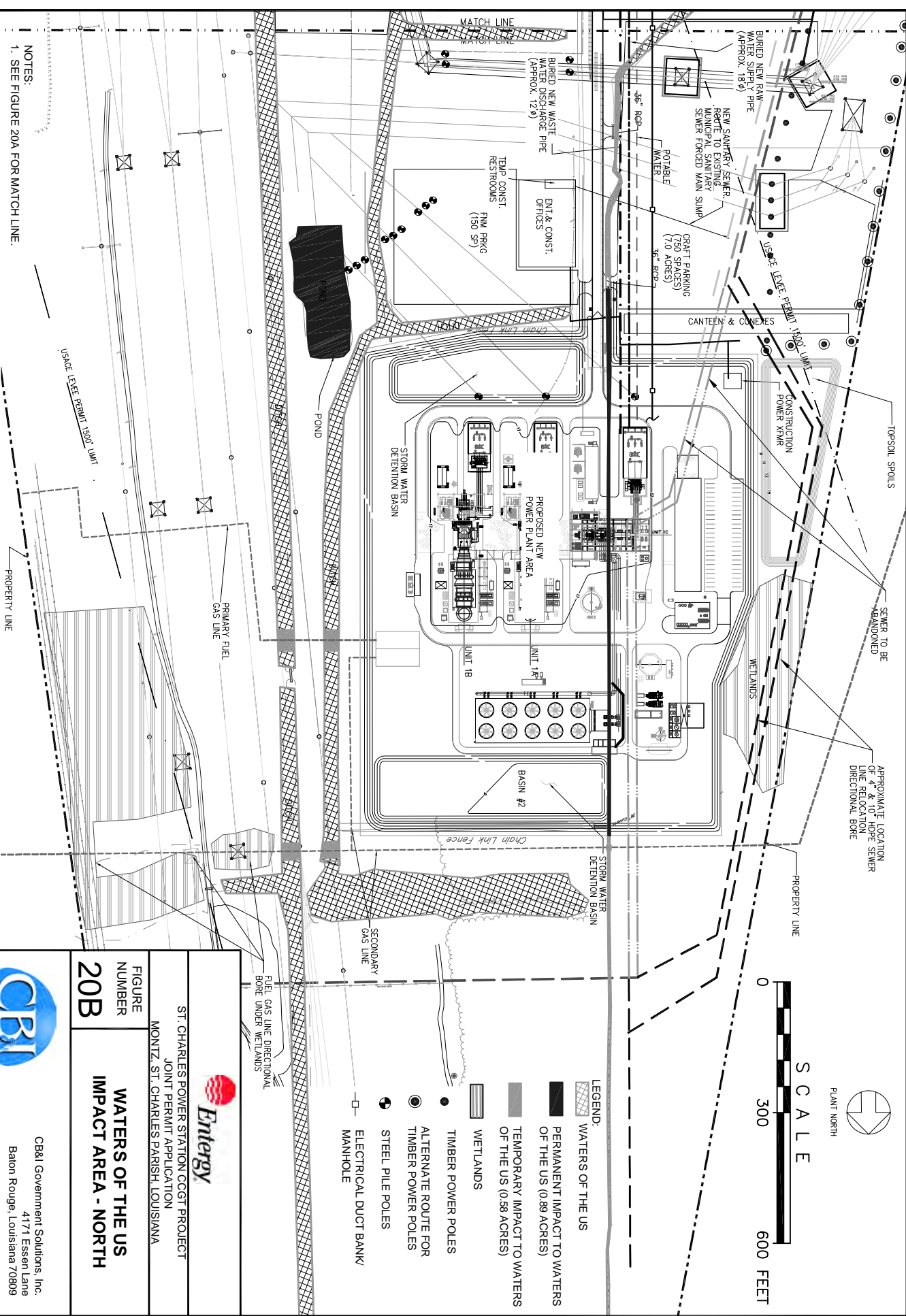
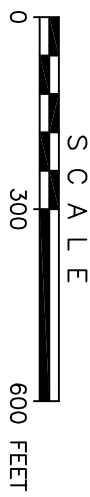
NOTES:

1. SEE FIGURE 20A FOR MATCH LINE.

REFERENCE: Source Drawing provided by CB&I Power, 152675-000-CV-002-00010 Rev B.

CB&I Government Solutions, Inc.  
4171 Essen Lane  
Baton Rouge, Louisiana 70809

OFFICE	DRAWN BY	CHECKED BY	APPROVED BY	DRAWING NUMBER
BTR	D. COMEAUX	09/17/15	CP	09/30/15
			DCS	09/30/15



- LEGEND:**
- WATERS OF THE US
  - PERMANENT IMPACT TO WATERS OF THE US (0.89 ACRES)
  - TEMPORARY IMPACT TO WATERS OF THE US (0.58 ACRES)
  - WETLANDS
  - TIMBER POWER POLES
  - ALTERNATE ROUTE FOR TIMBER POWER POLES
  - STEEL PILE POLES
  - ELECTRICAL DUCT BANK
  - MANHOLE

FIGURE NUMBER  
**20B**

**WATERS OF THE US  
IMPACT AREA - NORTH**

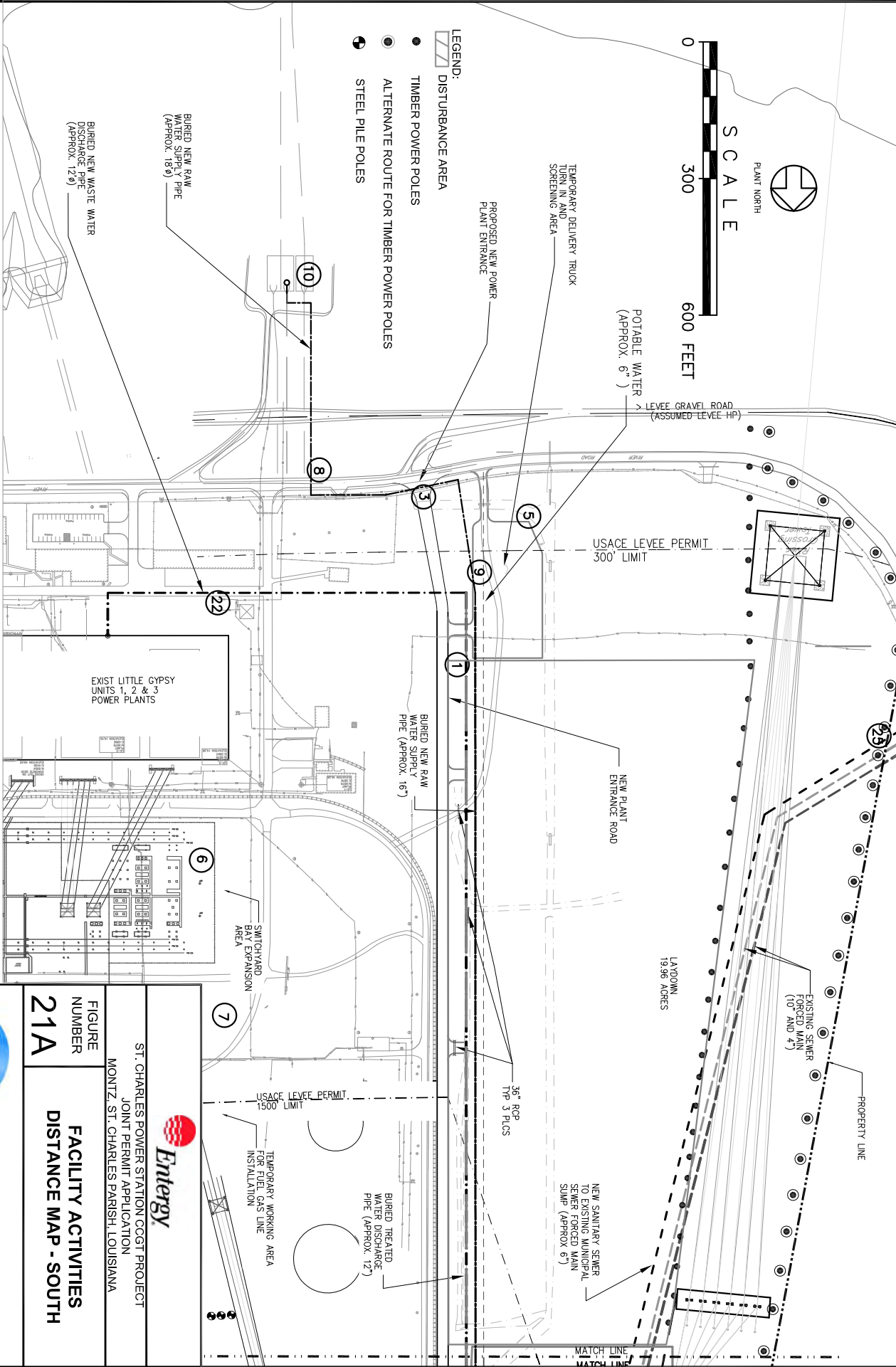
ST. CHARLES POWER STATION CCGT PROJECT  
JOINT PERMIT APPLICATION  
MONTZ, ST. CHARLES PARISH, LOUISIANA



CB&I Government Solutions, Inc.  
4177 Essen Lane  
Baton Rouge, Louisiana 70809

**NOTES:**  
1. SEE FIGURE 20A FOR MATCH LINE.  
REFERENCE: Source Drawing provided by CB&I Power, 152675-000-CV-02-00011 Rev B.

OFFICE	DRAWN BY	CHECKED BY	APPROVED BY	DRAWING NUMBER
BTR	D. COMEAUX	CP	DCS	scps_152720_A53



NOTES:

1. SEE FIGURE 21B FOR MATCH LINE.

REFERENCE: Source Drawing provided by CB&I Power, 152675-000-CV-002-00010 Rev B.

ST. CHARLES POWER STATION CCGT PROJECT  
JOINT PERMIT APPLICATION  
MONTZ, ST. CHARLES PARISH, LOUISIANA

FIGURE NUMBER

21A

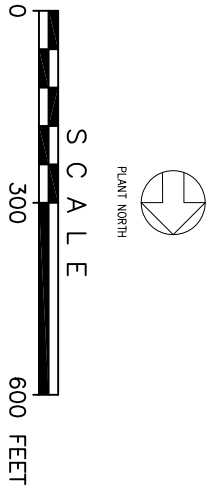
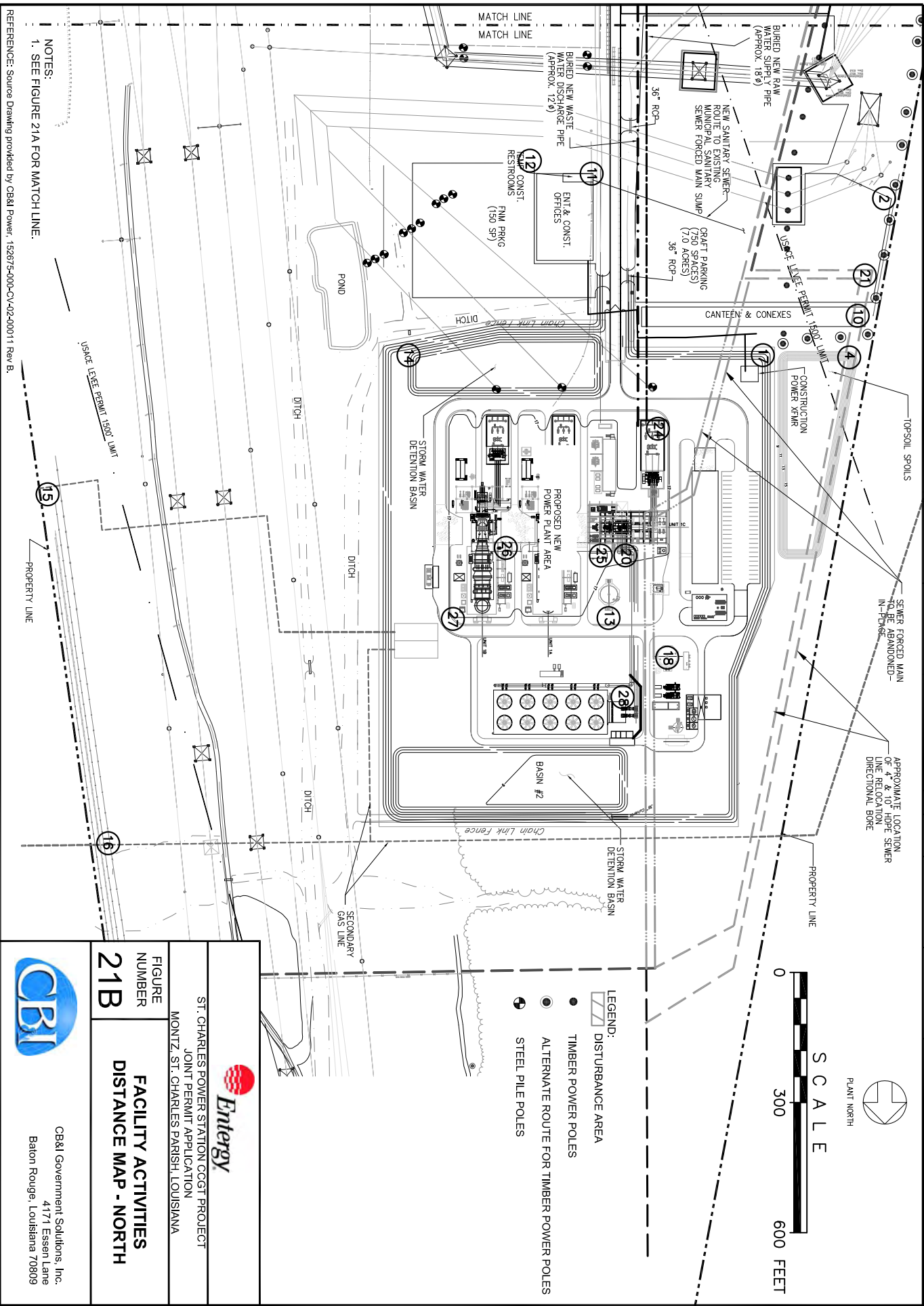
FACILITY ACTIVITIES

DISTANCE MAP - SOUTH



CB&I Government Solutions, Inc.  
4171 Essen Lane  
Baton Rouge, Louisiana 70809

OFFICE	DRAWN BY	CHECKED BY	APPROVED BY	DRAWING NUMBER
BTR	D. COMEAUX	09/30/15	CP	09/30/15
			DCS	09/30/15
				scps_152720_A54



- LEGEND:
- DISTURBANCE AREA
  - TIMBER POWER POLES
  - ALTERNATE ROUTE FOR TIMBER POWER POLES
  - STEEL PILE POLES

ST. CHARLES POWER STATION COGT PROJECT  
JOINT PERMIT APPLICATION  
MONTZ, ST. CHARLES PARISH, LOUISIANA

FIGURE NUMBER  
**21B**

FACILITY ACTIVITIES  
DISTANCE MAP - NORTH

CB&I Government Solutions, Inc.  
4171 Essen Lane  
Baton Rouge, Louisiana 70809

REFERENCE: Source Drawing provided by CB&I Power, 152675-000-CV-02-00011 Rev B.